

Lexington Planning Office

Who We Are

- Amanda Loomis,
Planning Director
- Sheila Page,
Assistant Planning Director
- Molly Belanger,
Land Use Planner
- Lori Kaufman,
Administrative Assistant

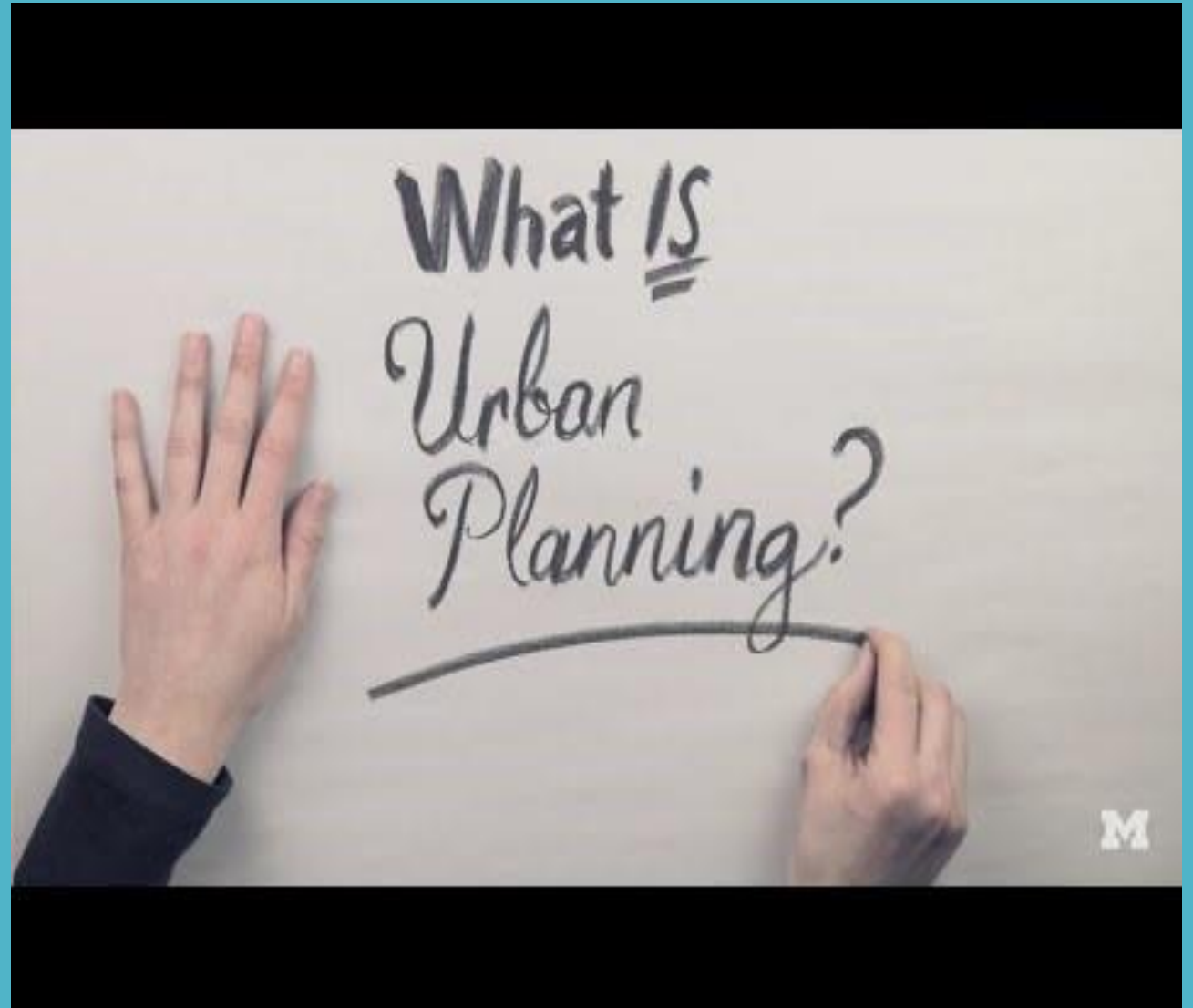
Where We Are

- Town Office Building
<https://www.lexingtonma.gov/planning-department>



What is Planning?

Community planning, according to the American Planning Association, is “a process that seeks to engage all members of the community to create a more prosperous, convenient, equitable, healthy, and attractive place for present and future generations”



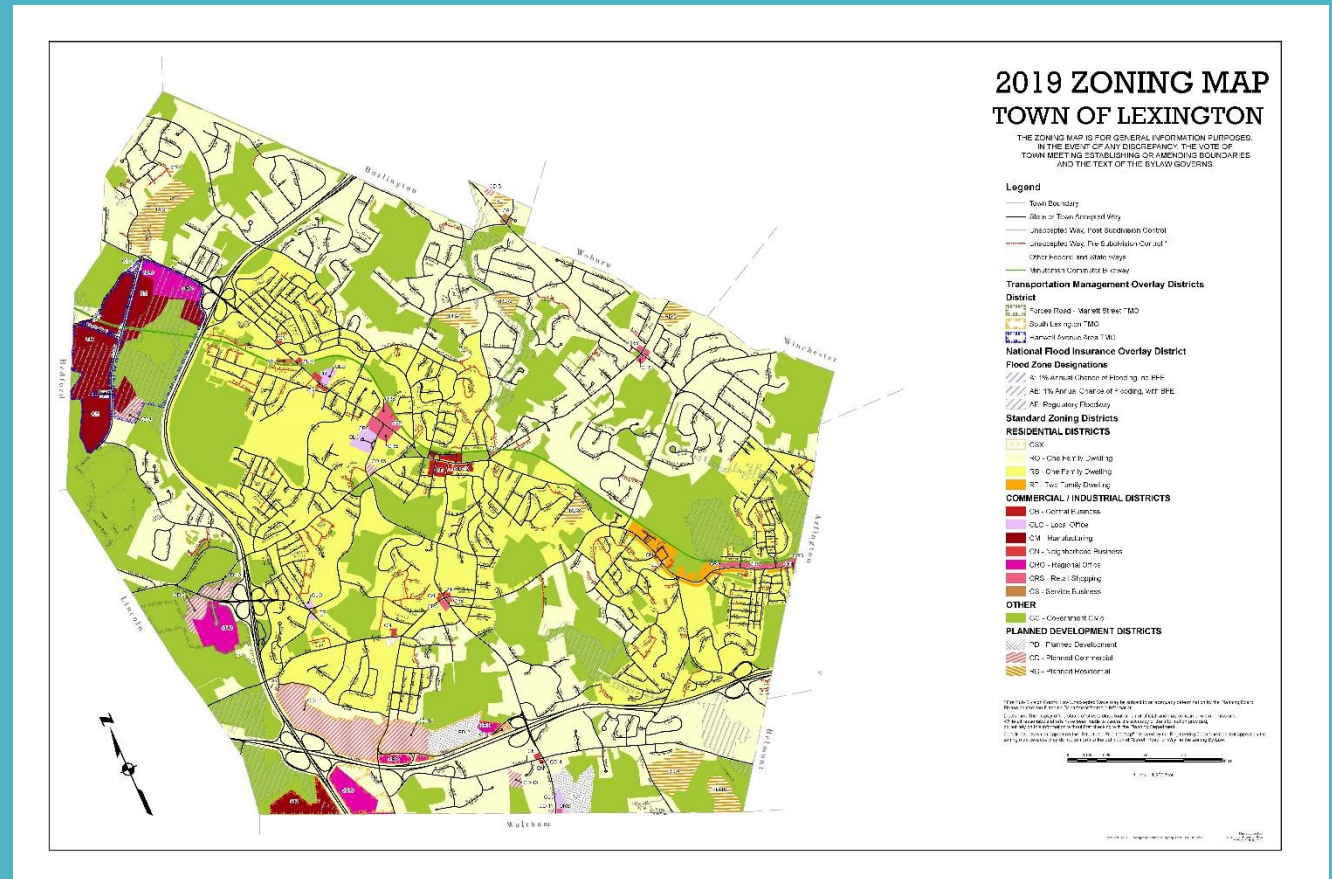
Planning Board

- 5 Full time members and 1 Associate Member
- Guide orderly, strategic development of a community
- Permitting and project review
- Master/Comprehensive Plan, Zoning Bylaws and Map, Subdivision Rules and Regulations



By-laws & Regulations

- Zoning Bylaws
- Subdivision Regulations
- Zoning Regulations
- Planning Board Rules and Procedures



Development Permitting

- Approval-Not-Required (ANR)
- Preliminary Subdivision Plans
- Definitive Subdivision Plans
- Site Plans Review
- Street Adequacy Determinations
- Special Permit Residential Developments



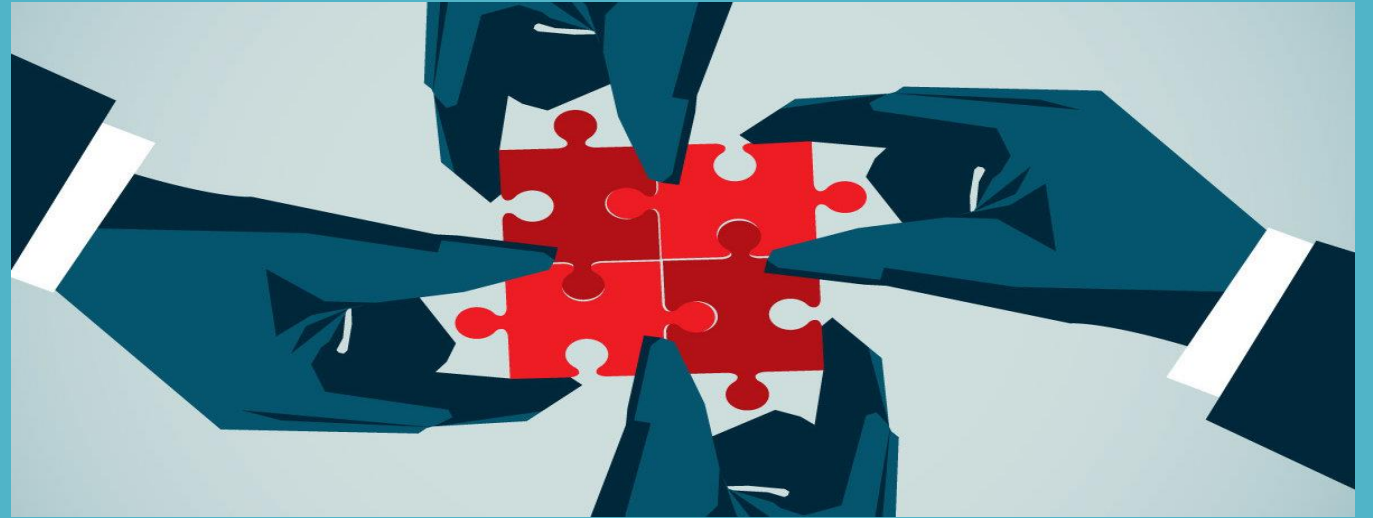
Planning Responsibilities

- Support various Boards and Committees
- Conduct meetings between public officials, developers, land owners, etc. regarding land use and planning efforts
- Liaison and Coordination
- Transportation Safety Group (TSG)



Long Range Planning

- Housing
- Transportation
- Land Use
- Economic Development
- Open Space & Recreation
- Public Facilities



Comprehensive Plan Update



Vital &
Resilient
Economy



Harmony
With Nature



Good
Governance



Accessible &
Connected



Livable
Community



Healthy & Socially
Responsible

- Comprehensive Plan Advisory Committee (CPAC)
- Sets the framework for future development and land use efforts
- Goals, Objective, Policies, Action/Implementation Planning