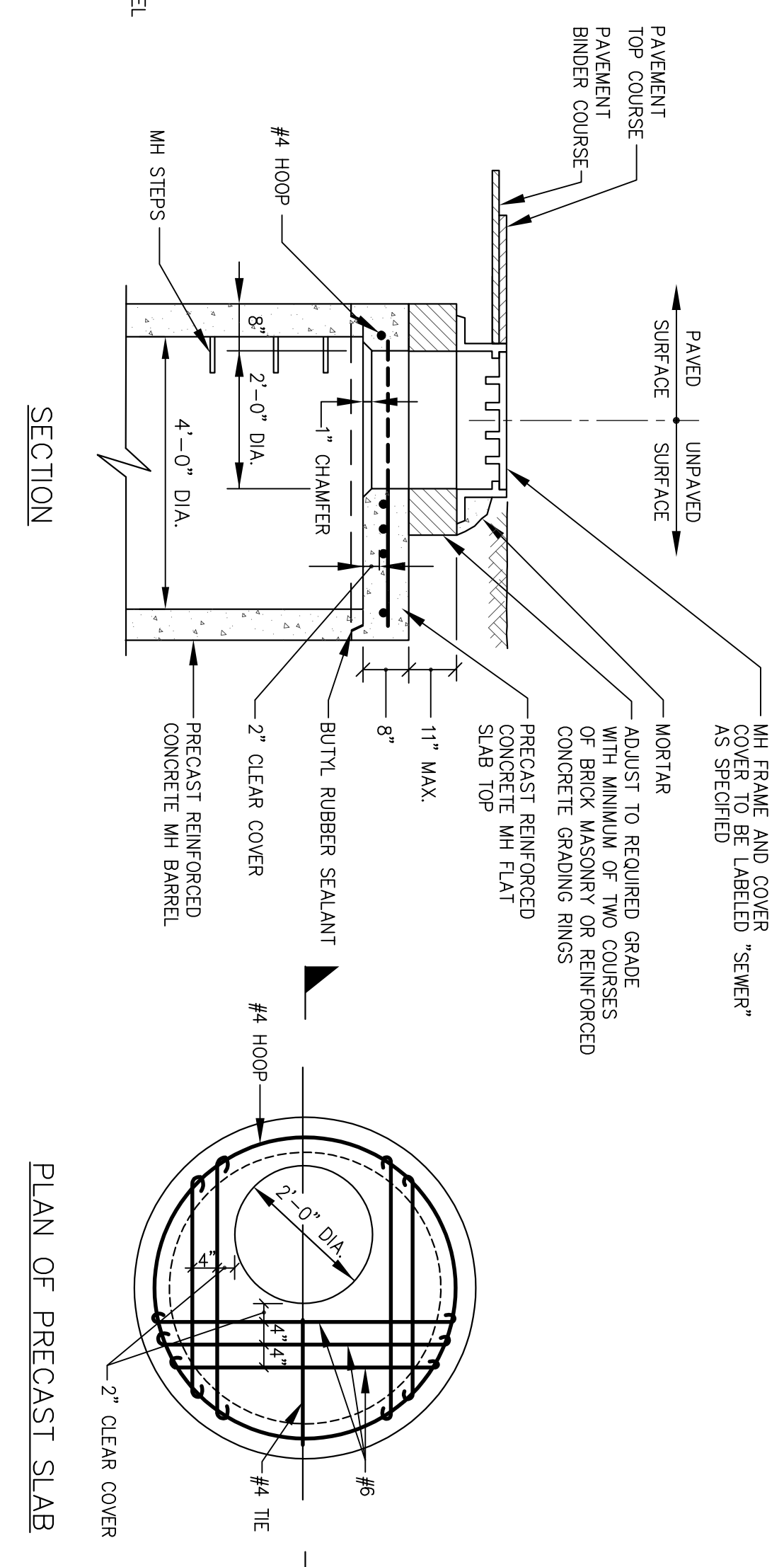
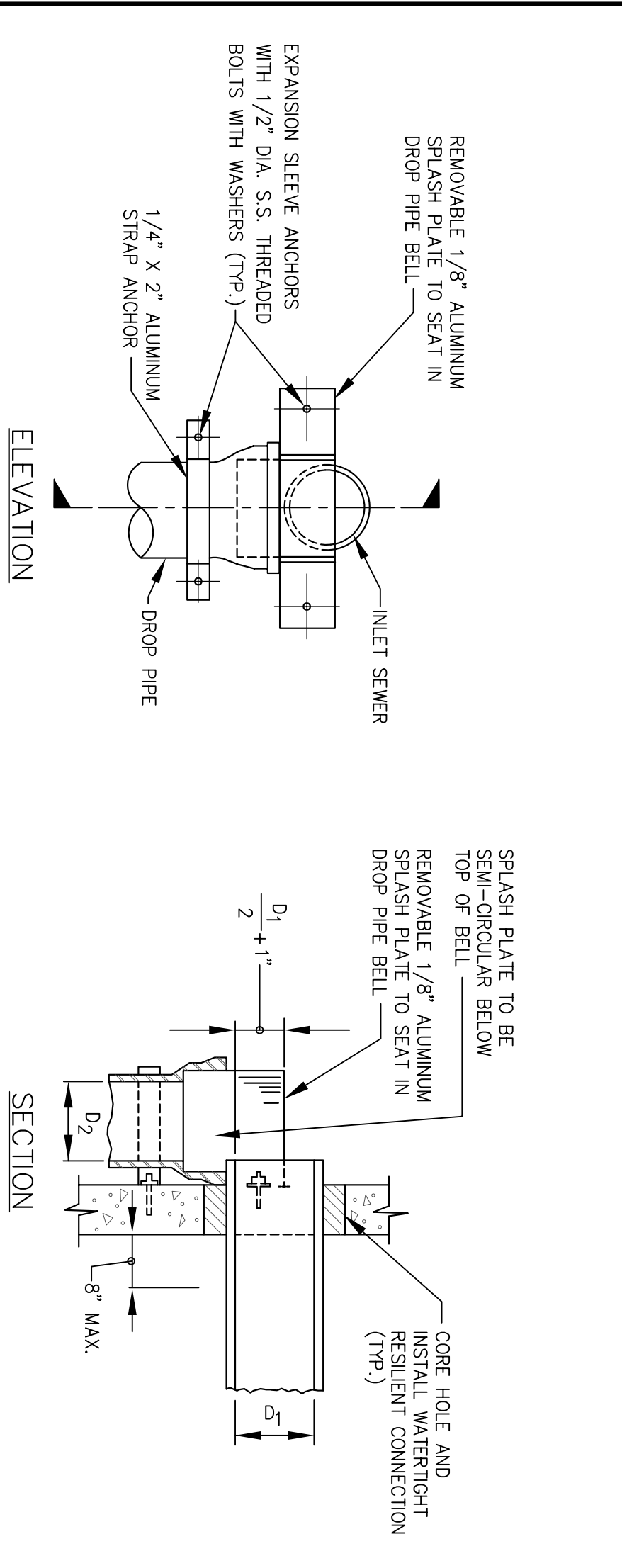


**NOTES:**  
 1. D<sub>2</sub> = D<sub>1</sub> WHEN D<sub>1</sub> IS 12" OR SMALLER.  
 2. D<sub>2</sub> MAY BE ONE SIZE SMALLER THAN D<sub>1</sub> WHEN D<sub>1</sub> IS LARGER THAN 12".

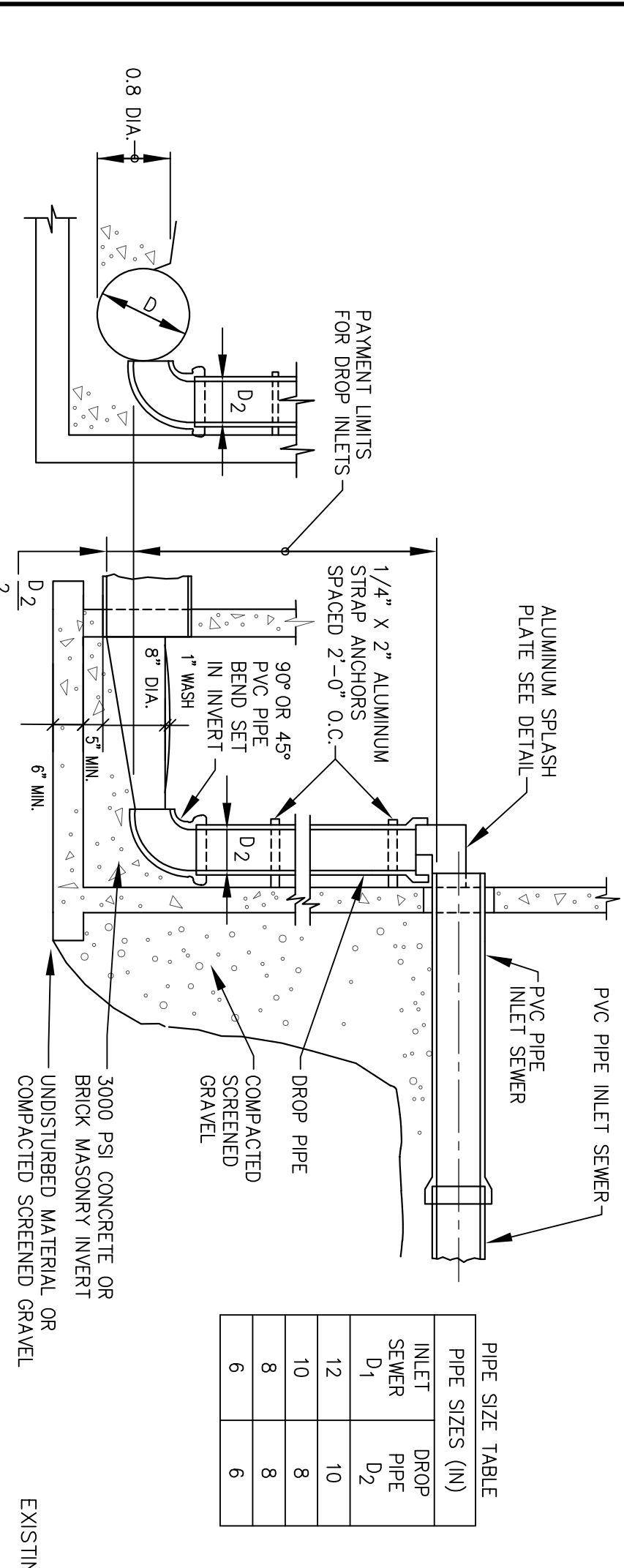
**DROP INLETS FOR PVC PIPE SEWERS**  
 NOT TO SCALE  
 2-1.4.1 (REV. 03-15-95)



**PRECAST FLAT SLAB TOP FOR SHALLOW MANHOLE**  
 NOT TO SCALE  
 2-1.5.4.3 (REV. 03-15-95)



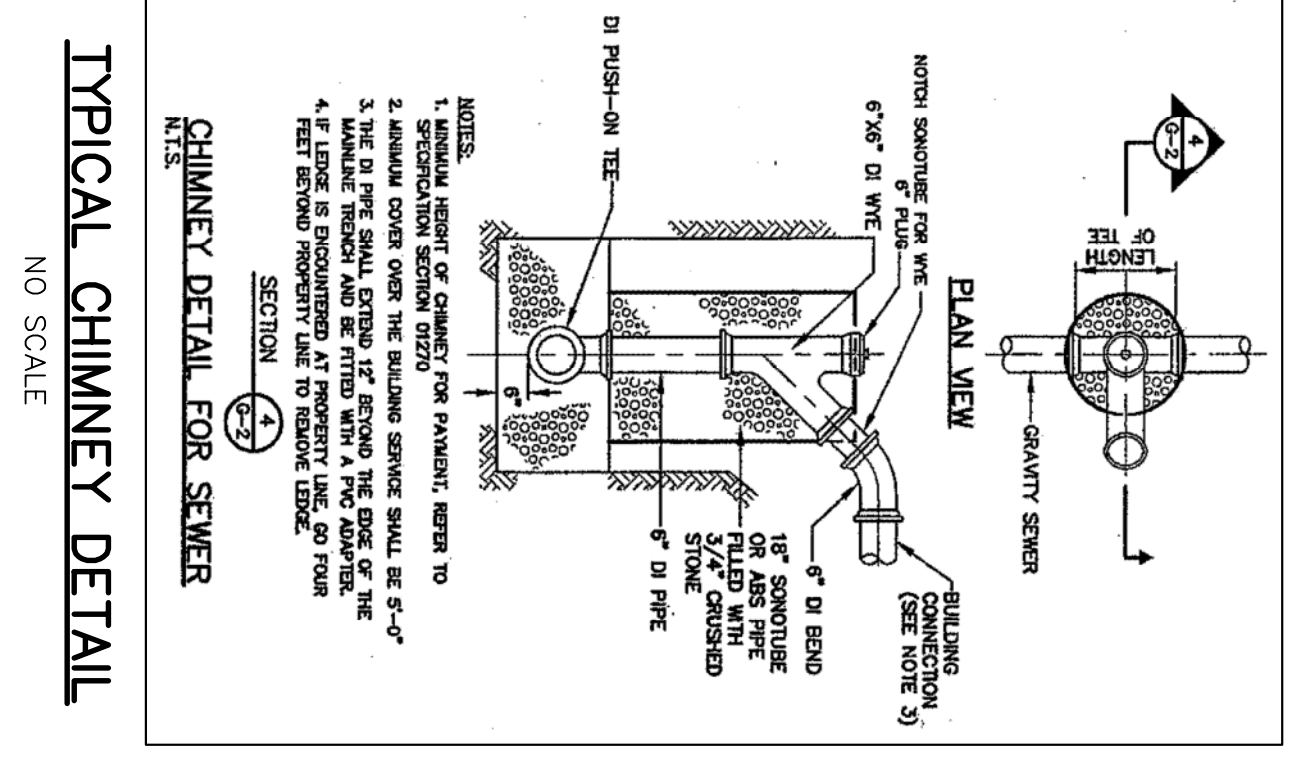
**ALUMINUM SPLASH PLATE DETAIL**



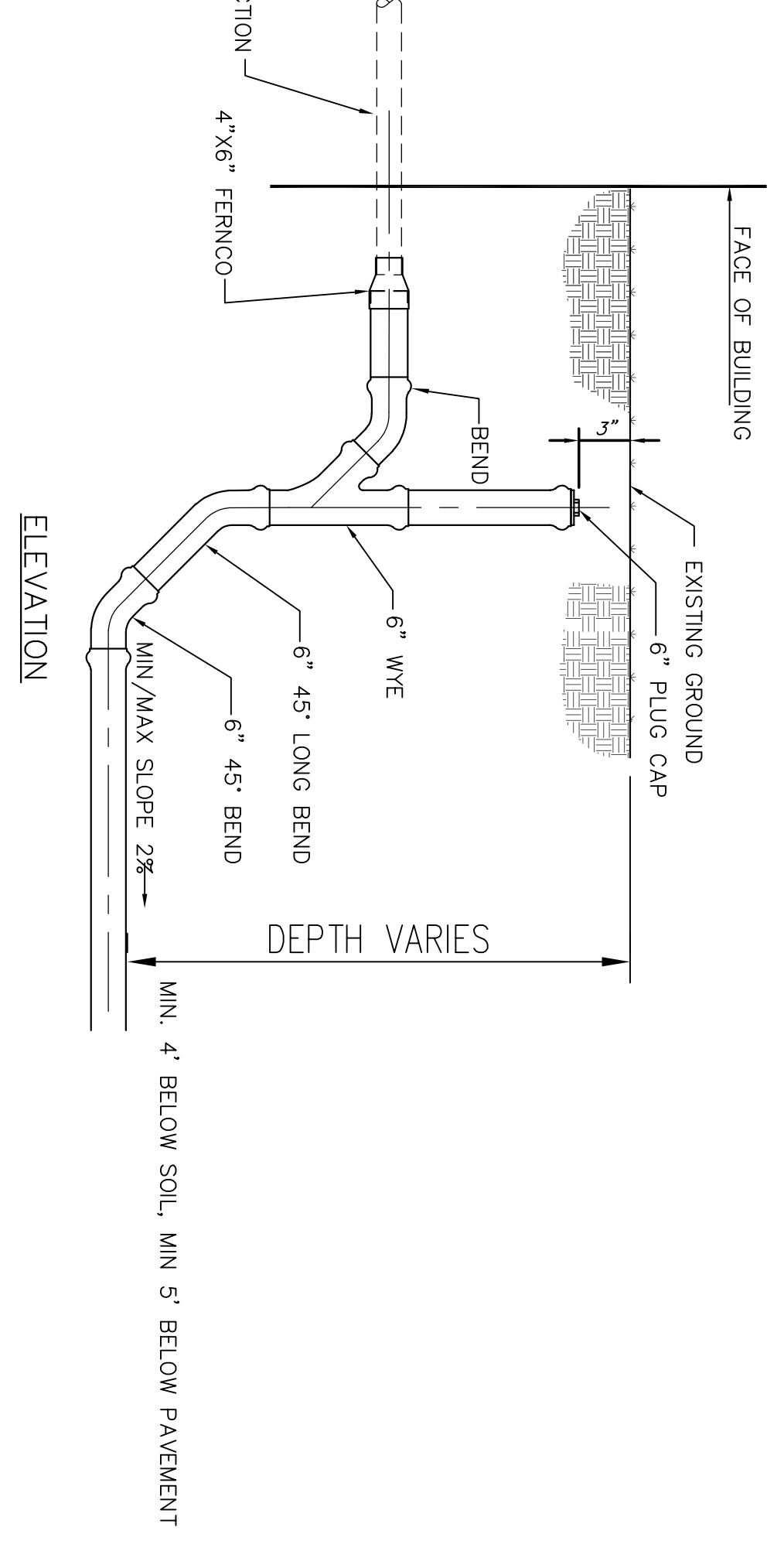
**PIPE SIZE TABLE**

PIPE SIZES (IN)	INLET SEWER	DROP PIPE
D <sub>1</sub>	12	10
D <sub>2</sub>	10	8
	8	6
	6	6

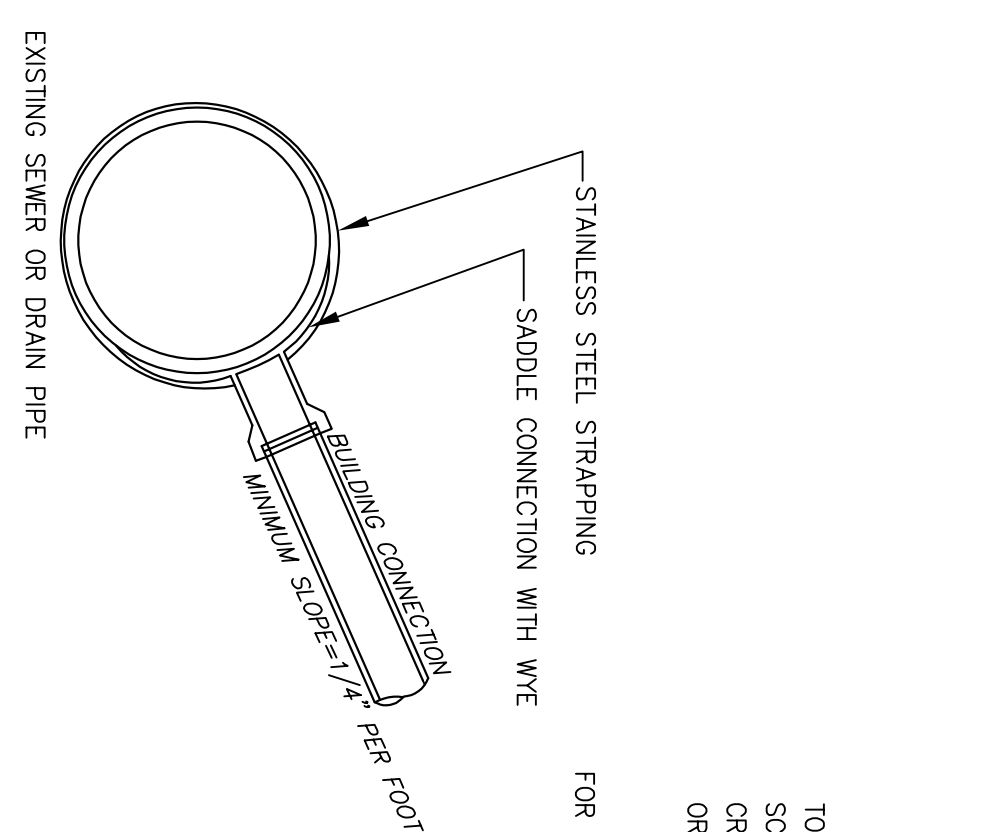
**INVERT DETAIL AT SIDE DROPS**  
**INVERT DETAIL AT MAIN RUN DROPS**  
**INSIDE DROP INLETS FOR PVC PIPE SEWERS**  
**12 INCH DIAMETER AND SMALLER**  
 NOT TO SCALE  
 2-1.4.3 (REV. 03-15-95)



**TYPICAL CHIMNEY DETAIL**  
 NO SCALE

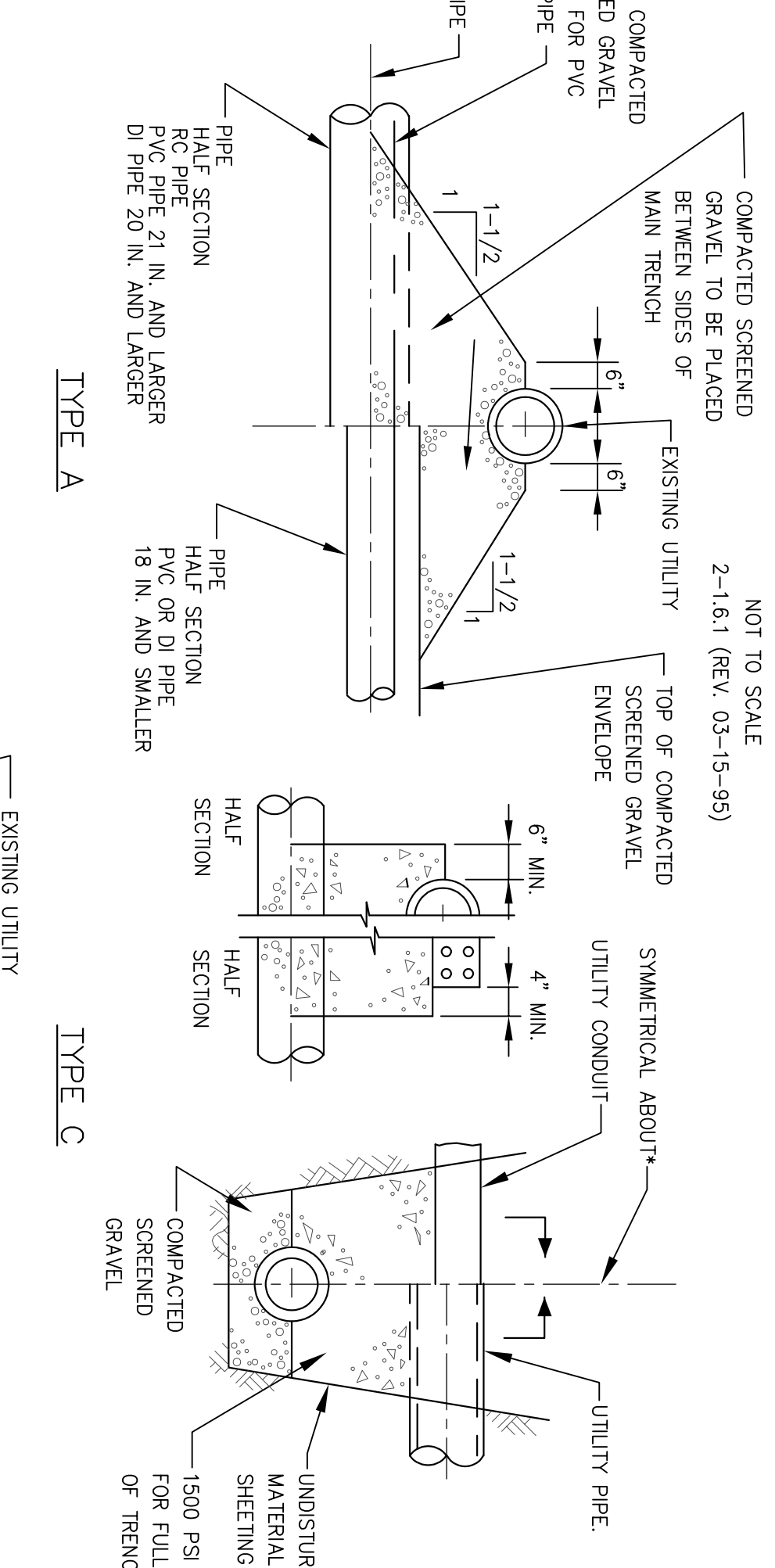


**CLEAN OUT RISER FOR SHALLOW BUILDING CONNECTIONS**  
 NO SCALE



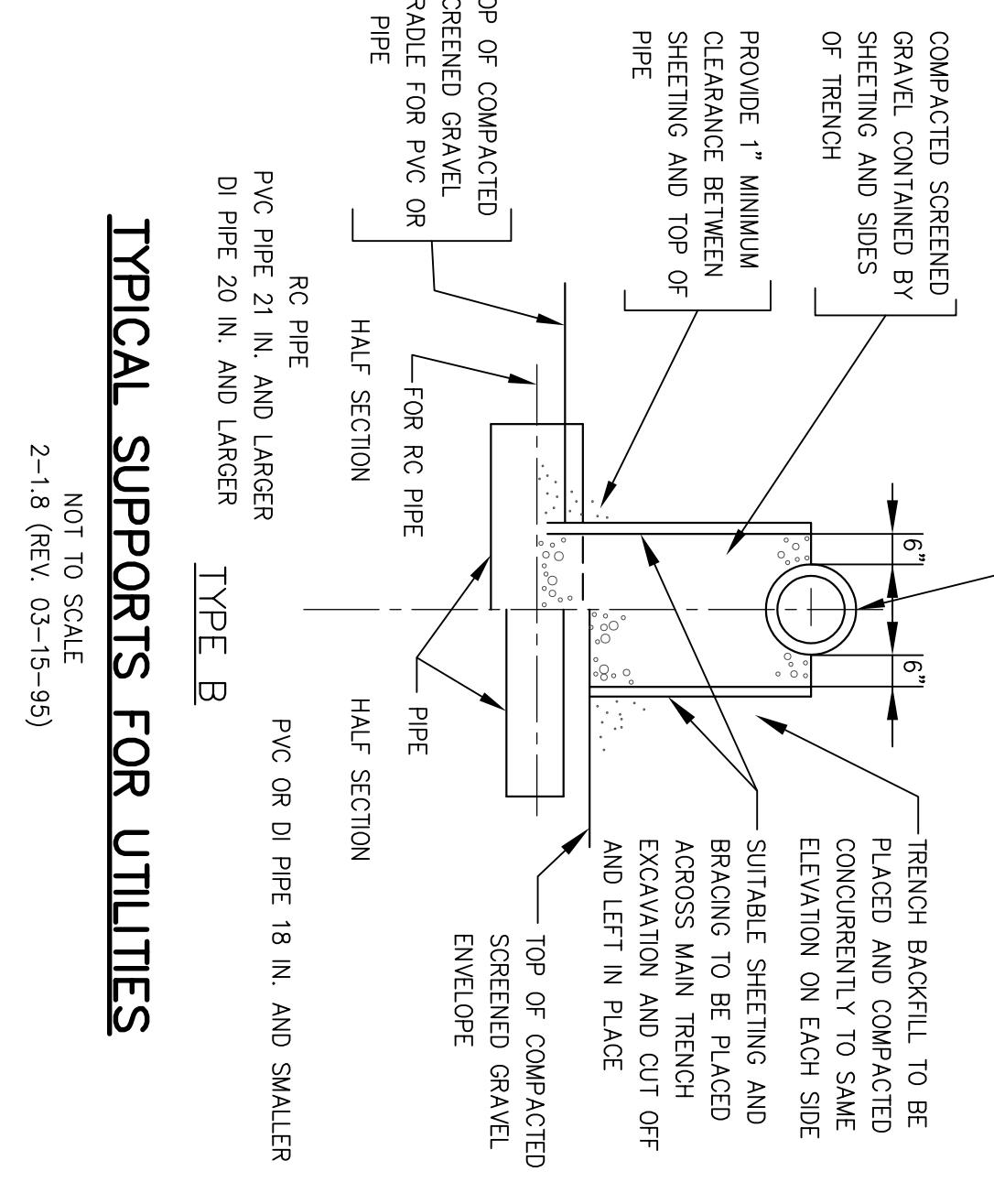
**NOTES:**  
 1. FULL PVC OR IRON SADDLE MAY BE USED TO CONNECT TO EXISTING PVC, CLAY, CONCRETE OR IRON PIPE.  
 2. SADDLES MUST HAVE RUBBER GASKETS AND SHALL BE TIGHTENED TO SPECIFIED TORQUE.  
 3. WITH STRAPS, SADDLES WILL NOT BE CEMENTED ON TO THE PIPE.  
 4. PIPE SHALL BE CUT TO CONFORM TO THE OPENING IN THE SADDLE OR A FULL WYE FITTING ARE NOT ALLOWED.

**SEWER SERVICE SADDLE CONNECTION**  
 NO SCALE



**FORCE MAIN THRUST BLOCK**  
 NOT TO SCALE  
 2-1.6.1 (REV. 03-15-95)

**NOTES:**  
 1. WHERE SO INDICATED ON PLANS, THE FORCE MAIN BENDS SHALL BE BACKED UP WITH A CONCRETE THRUST BLOCK BETWEEN THE PIPE AND UNDISTURBED MATERIAL.  
 2. REQUIRED BEARING AREA TO BE CALCULATED ON VERTICAL PLANE 90 DEG. TO RADIAL PLANE PASSING THROUGH MIDPOINT OF BEND.  
 3. MINIMUM BEARING AREA: 2.0 SQ.FT.  
 4. SEE PLANS FOR REQUIRED BEARING AREAS GREATER THAN MINIMUM.



**TYPICAL SUPPORTS FOR UTILITIES**  
 NOT TO SCALE  
 2-1.8 (REV. 03-15-95)

DATE	REVISION	BY
3/7/22	1	AM

**TOWN OF LEXINGTON STANDARD DETAILS SEWER 1**

DESIGNED BY: D.C.      DATE: MARCH 2015      SCALE: AS NOTED  
 CHECKED BY: \_\_\_\_\_  
 APPROVED BY: \_\_\_\_\_

*Town of Lexington ENGINEERING DIVISION*

SHEET NO. 1 OF 2