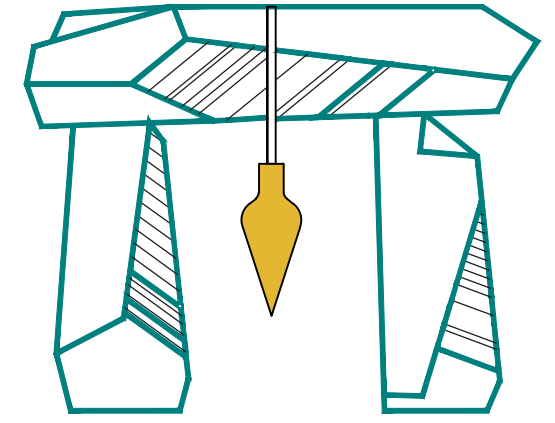


DeCelle-Burke-Sala



1266 Furnace Brook Parkway #401
 Quincy, MA 02169
 617-405-5100(o) 617-405-5101(f)
 www.decelle-burke-sala.com

- GENERAL NOTES:
1. THIS PLAN WAS CREATED USING AutoTURN, A PROPRIETARY TRAFFIC FLOW PATH ANALYSIS SOFTWARE PACKAGE USED WITH AutoCAD.
 2. THE EMERGENCY VEHICLE ANALYZED IS A 43-FOOT LONG LADDER FIRE TRUCK THAT CONFORMS TO THE SPECIFICATIONS PROVIDED BY THE TOWN OF LEXINGTON TO THIS OFFICE.

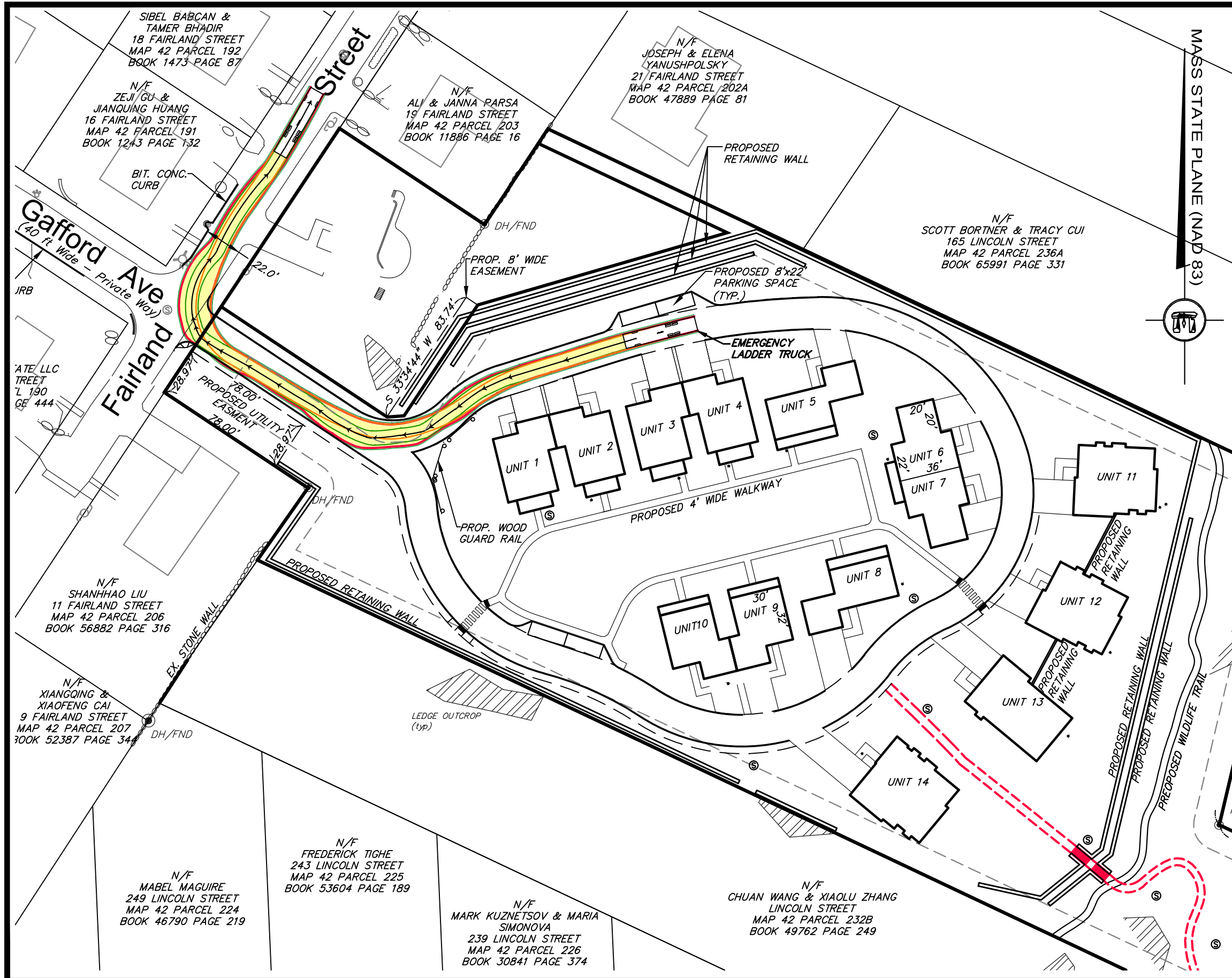
PROJECT TITLE:
PROPOSED RESIDENTIAL DEVELOPMENT LEXINGTON, MA

EMERGENCY VEHICLE ACCESS PATH

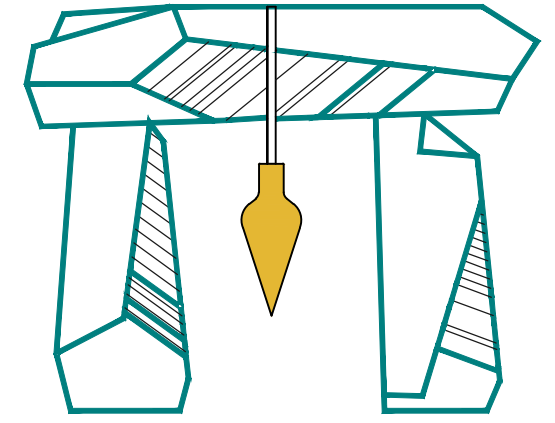
PREPARED FOR:
 BARON CUSTOM HOMES
 1 GARFIELD CIRCLE
 BURLINGTON, MA 01803

DATE:
 REVISION:





DeCelle-Burke-Sala



1266 Furnace Brook Parkway #401
 Quincy, MA 02169
 617-405-5100(o) 617-405-5101(f)
 www.decelle-burke-sala.com

- GENERAL NOTES:
1. THIS PLAN WAS CREATED USING AutoTURN, A PROPRIETARY TRAFFIC FLOW PATH ANALYSIS SOFTWARE PACKAGE USED WITH AutoCAD.
 2. THE EMERGENCY VEHICLE ANALYZED IS A 43-FOOT LONG LADDER FIRE TRUCK THAT CONFORMS TO THE SPECIFICATIONS PROVIDED BY THE TOWN OF LEXINGTON TO THIS OFFICE.

PROJECT TITLE:

PROPOSED RESIDENTIAL DEVELOPMENT LEXINGTON, MA

EMERGENCY VEHICLE EGRESS PATH

PREPARED FOR:
 BARON CUSTOM HOMES
 1 GARFIELD CIRCLE
 BURLINGTON, MA 01803

DATE: JUNE 12, 2019

REVISION:

