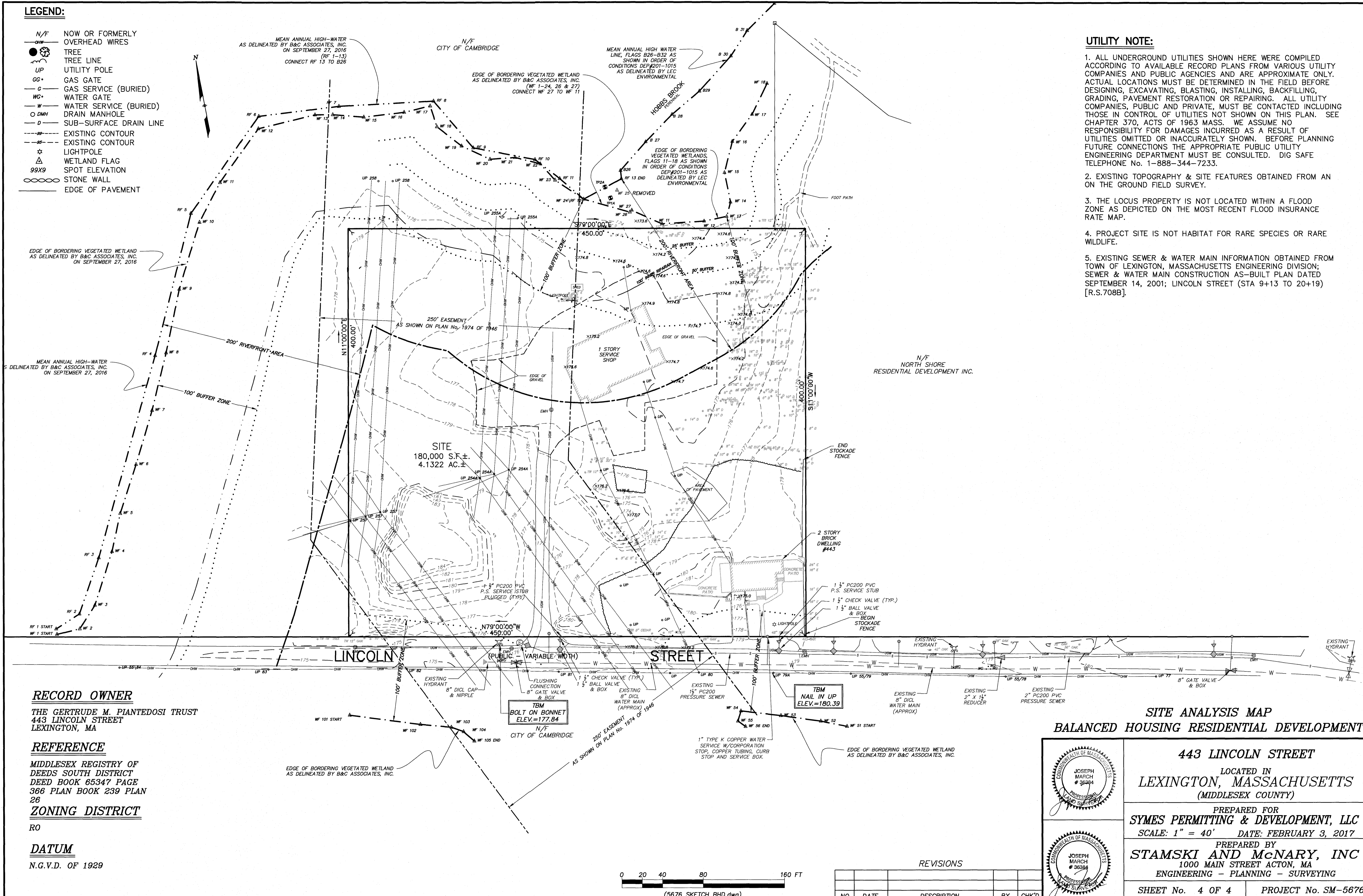


LEGEND:

- N/F NOW OR FORMERLY OVERHEAD WIRES
- DMH DRAIN MANHOLE
- TREE TREE
- UTILITY POLE UTILITY POLE
- GG GAS GATE
- G GAS SERVICE (BURIED)
- WG WATER GATE
- W WATER SERVICE (BURIED)
- D SUB-SURFACE DRAIN LINE
- - - - - EXISTING CONTOUR
- - - - - EXISTING CONTOUR
- ☆ LIGHTPOLE
- △ WETLAND FLAG
- 99X9 SPOT ELEVATION
- ○ ○ ○ ○ STONE WALL
- — — — — EDGE OF PAVEMENT

UTILITY NOTE:

1. ALL UNDERGROUND UTILITIES SHOWN HERE WERE COMPILED ACCORDING TO AVAILABLE RECORD PLANS FROM VARIOUS UTILITY COMPANIES AND PUBLIC AGENCIES AND ARE APPROXIMATE ONLY. ACTUAL LOCATIONS MUST BE DETERMINED IN THE FIELD BEFORE DESIGNING, EXCAVATING, BLASTING, INSTALLING, BACKFILLING, GRADING, PAVEMENT RESTORATION OR REPAIRING. ALL UTILITY COMPANIES, PUBLIC AND PRIVATE, MUST BE CONTACTED INCLUDING THOSE IN CONTROL OF UTILITIES NOT SHOWN ON THIS PLAN. SEE CHAPTER 370, ACTS OF 1963 MASS. WE ASSUME NO RESPONSIBILITY FOR DAMAGES INCURRED AS A RESULT OF UTILITIES OMITTED OR INACCURATELY SHOWN. BEFORE PLANNING FUTURE CONNECTIONS THE APPROPRIATE PUBLIC UTILITY ENGINEERING DEPARTMENT MUST BE CONSULTED. DIG SAFE TELEPHONE No. 1-888-344-7233.
2. EXISTING TOPOGRAPHY & SITE FEATURES OBTAINED FROM AN ON THE GROUND FIELD SURVEY.
3. THE LOCUS PROPERTY IS NOT LOCATED WITHIN A FLOOD ZONE AS DEPICTED ON THE MOST RECENT FLOOD INSURANCE RATE MAP.
4. PROJECT SITE IS NOT HABITAT FOR RARE SPECIES OR RARE WILDLIFE.
5. EXISTING SEWER & WATER MAIN INFORMATION OBTAINED FROM TOWN OF LEXINGTON, MASSACHUSETTS ENGINEERING DIVISION; SEWER & WATER MAIN CONSTRUCTION AS-BUILT PLAN DATED SEPTEMBER 14, 2001; LINCOLN STREET (STA 9+13 TO 20+19) [R.S.708B].



RECORD OWNER

THE GERTRUDE M. PIANTEDOSI TRUST
443 LINCOLN STREET
LEXINGTON, MA

REFERENCE

MIDDLESEX REGISTRY OF DEEDS SOUTH DISTRICT
DEED BOOK 65347 PAGE 366
PLAN BOOK 239 PLAN 26

ZONING DISTRICT

RO

DATUM

N.G.V.D. OF 1929

**SITE ANALYSIS MAP
BALANCED HOUSING RESIDENTIAL DEVELOPMENT**

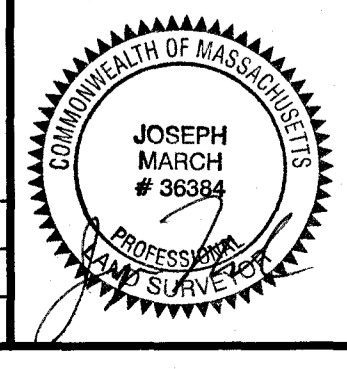
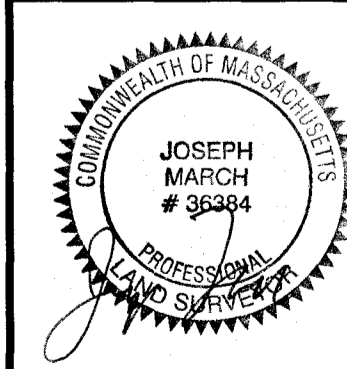
443 LINCOLN STREET

LOCATED IN
LEXINGTON, MASSACHUSETTS
(MIDDLESEX COUNTY)

PREPARED FOR
SYMES PERMITTING & DEVELOPMENT, LLC
SCALE: 1" = 40' DATE: FEBRUARY 3, 2017

PREPARED BY
STAMSKI AND McNARY, INC
1000 MAIN STREET ACTON, MA
ENGINEERING - PLANNING - SURVEYING

SHEET No. 4 OF 4 PROJECT No. SM-5676



REVISIONS				
NO.	DATE	DESCRIPTION	BY	CHK'D

