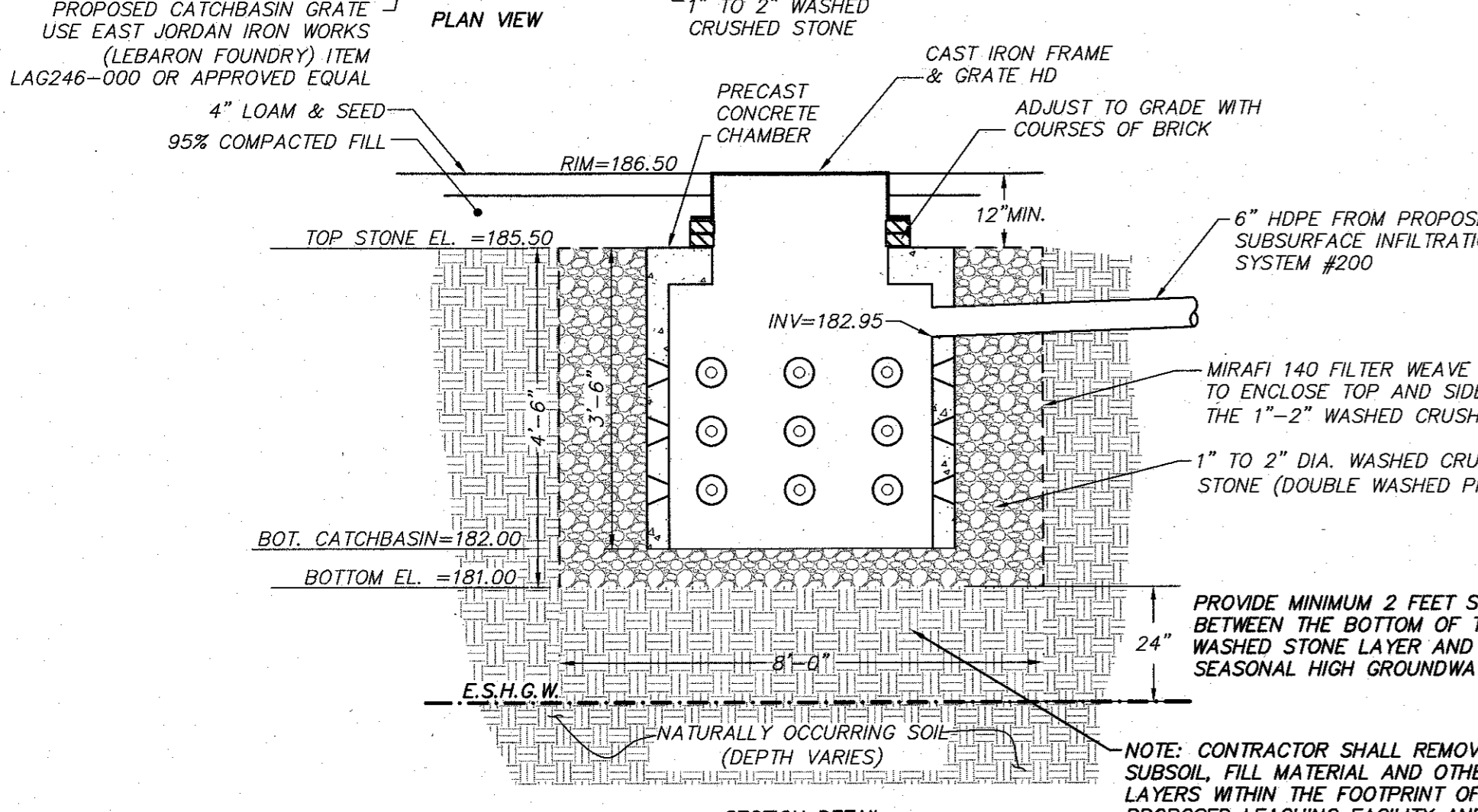
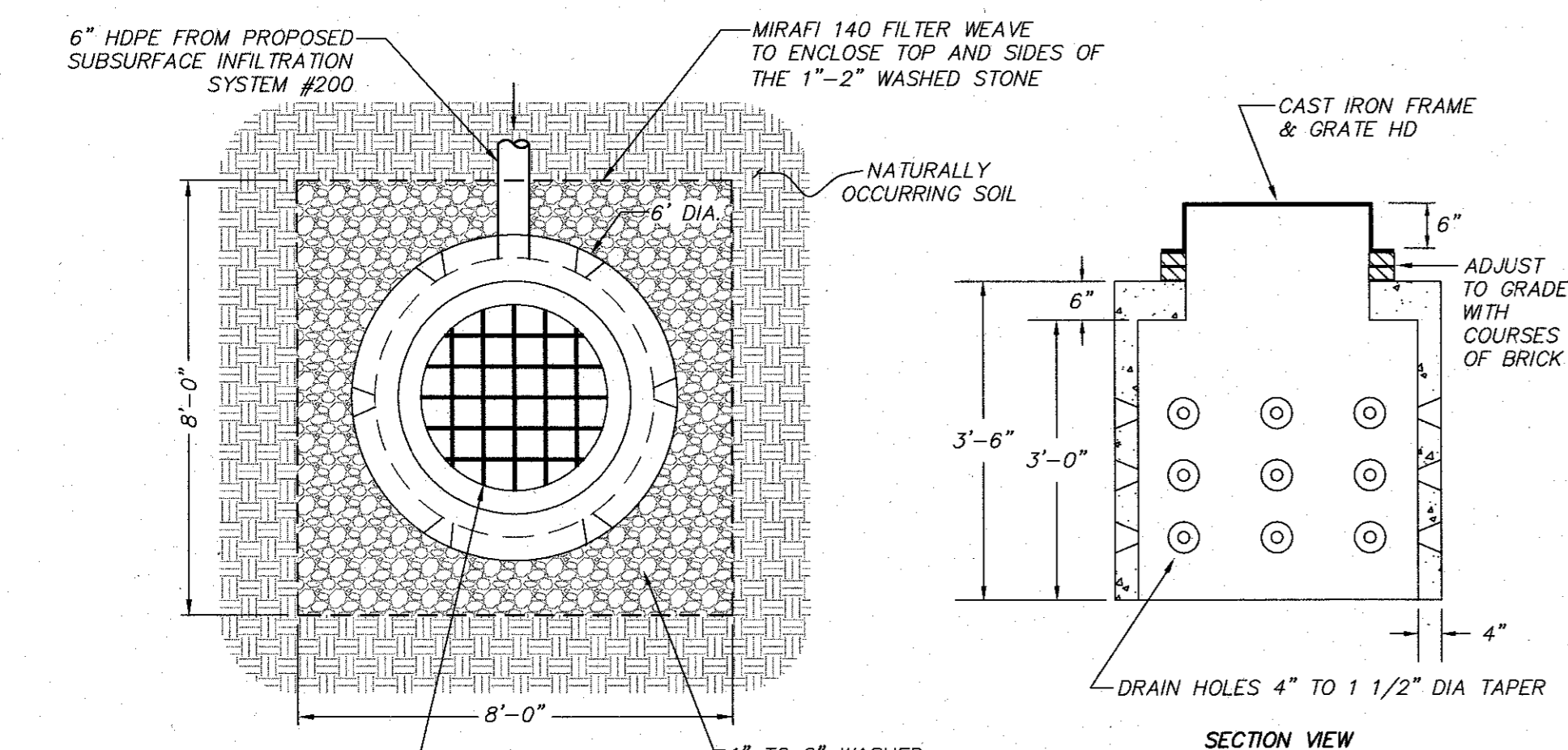


**NOTES:**  
 1. C-C IS CENTER TO CENTER  
 2. PROVIDE 6" MIN. SEPARATION BETWEEN ROWS OF CHAMBERS  
 3. ALL DOWNSPOUTS ATTACHED TO EACH PROPOSED DWELLING SHALL CONNECT TO DEDICATED PROPOSED SUBSURFACE INFILTRATION SYSTEMS

**PROPOSED SUBSURFACE INFILTRATION SYSTEM FROM ROOF - CROSS SECTION**  
(NOT TO SCALE)



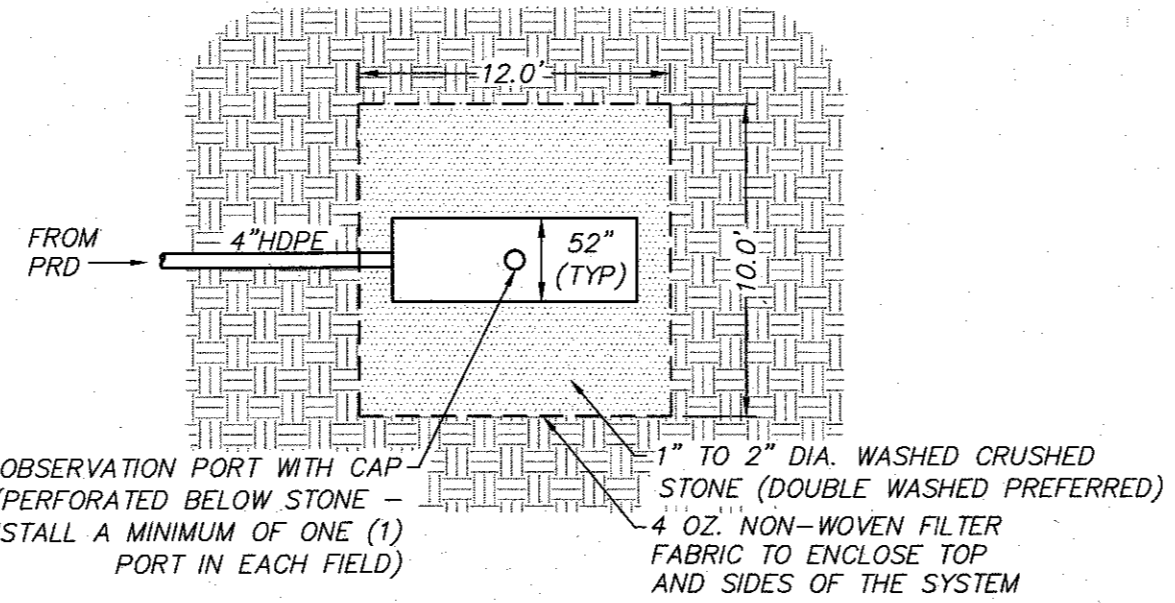
**NOTES:**  
 1. CONCRETE: 5,000 PSI MINIMUM AFTER 28 DAYS.  
 2. DESIGNED FOR H-20 LOADING  
 3. USE SHEA CONCRETE ITEM NO. DW-MDWH

**PROPOSED LEACHING CATCHBASIN (PCB#5)**  
(NOT TO SCALE)

LEXINGTON PLANNING BOARD

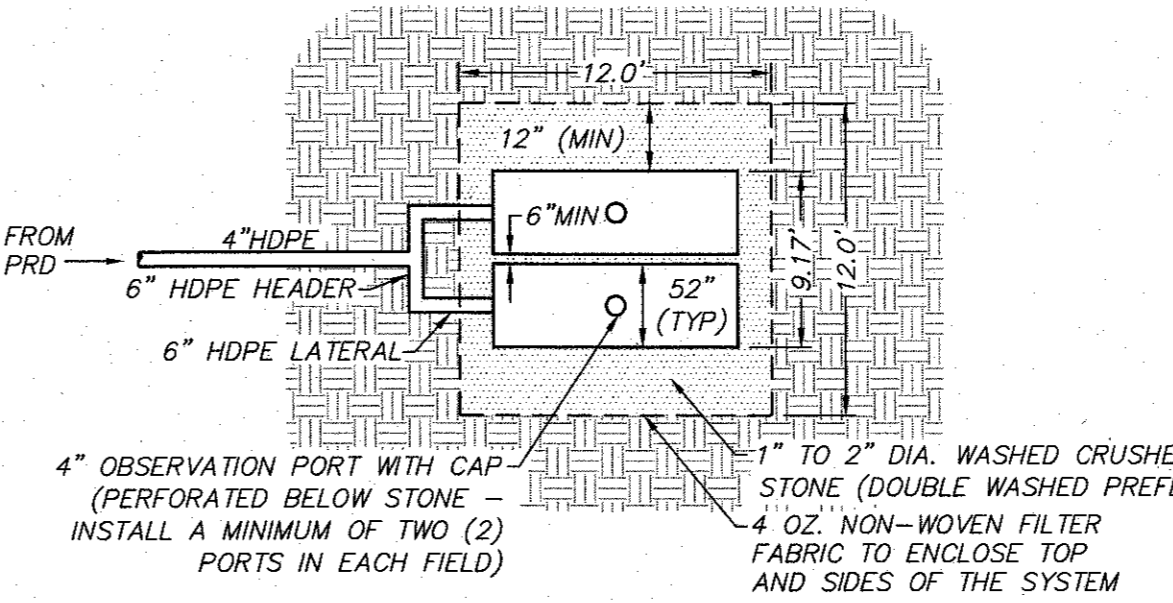
DATE: \_\_\_\_\_ TOWN CLERK \_\_\_\_\_ DATE \_\_\_\_\_

I, \_\_\_\_\_ CLERK OF THE TOWN OF LEXINGTON, MASSACHUSETTS HEREBY CERTIFY THAT THE NOTICE OF APPROVAL OF THIS PLAN BY THE LEXINGTON PLANNING BOARD HAS BEEN RECEIVED AND RECORDED AT THE OFFICE AND NO NOTICE OF APPEAL WAS RECEIVED DURING TWENTY DAYS NEXT AFTER SUCH RECEIPT AND RECORDING OF SAID NOTICE.



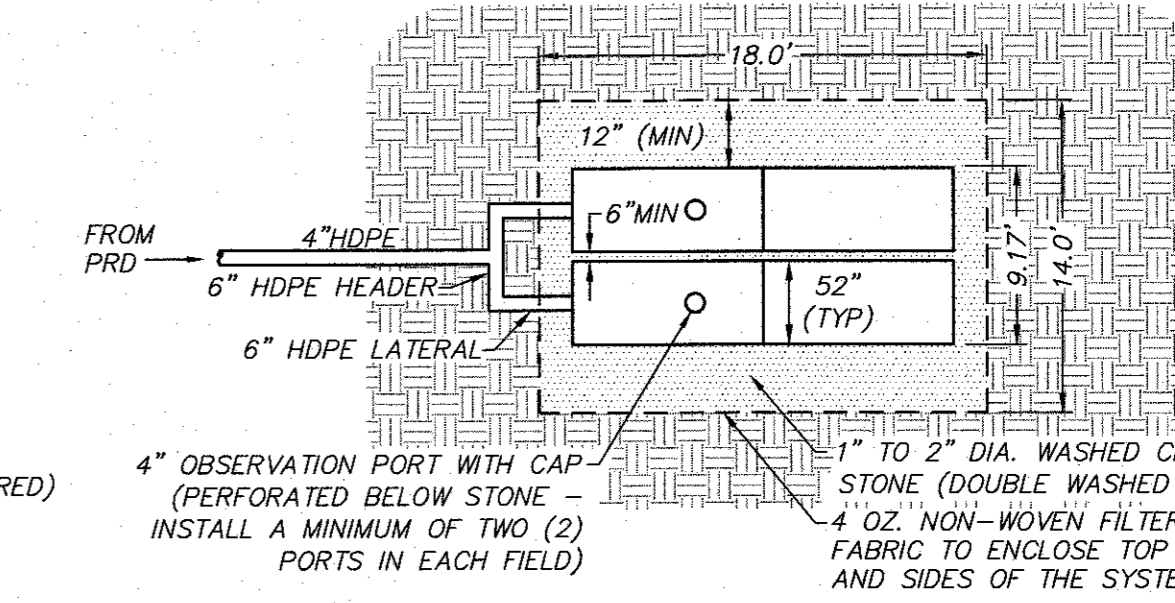
USE 1 CULTEC RECHARGER 330XLHD UNITS FOR PROPOSED ROOFS WITH FOOTPRINTS OF 1,300 SF (52'Wx8.5'Lx30.5'H)

**PROPOSED SUBSURFACE INFILTRATION SYSTEM FROM ROOF (TYPE A) - PLAN VIEW**  
(NOT TO SCALE)



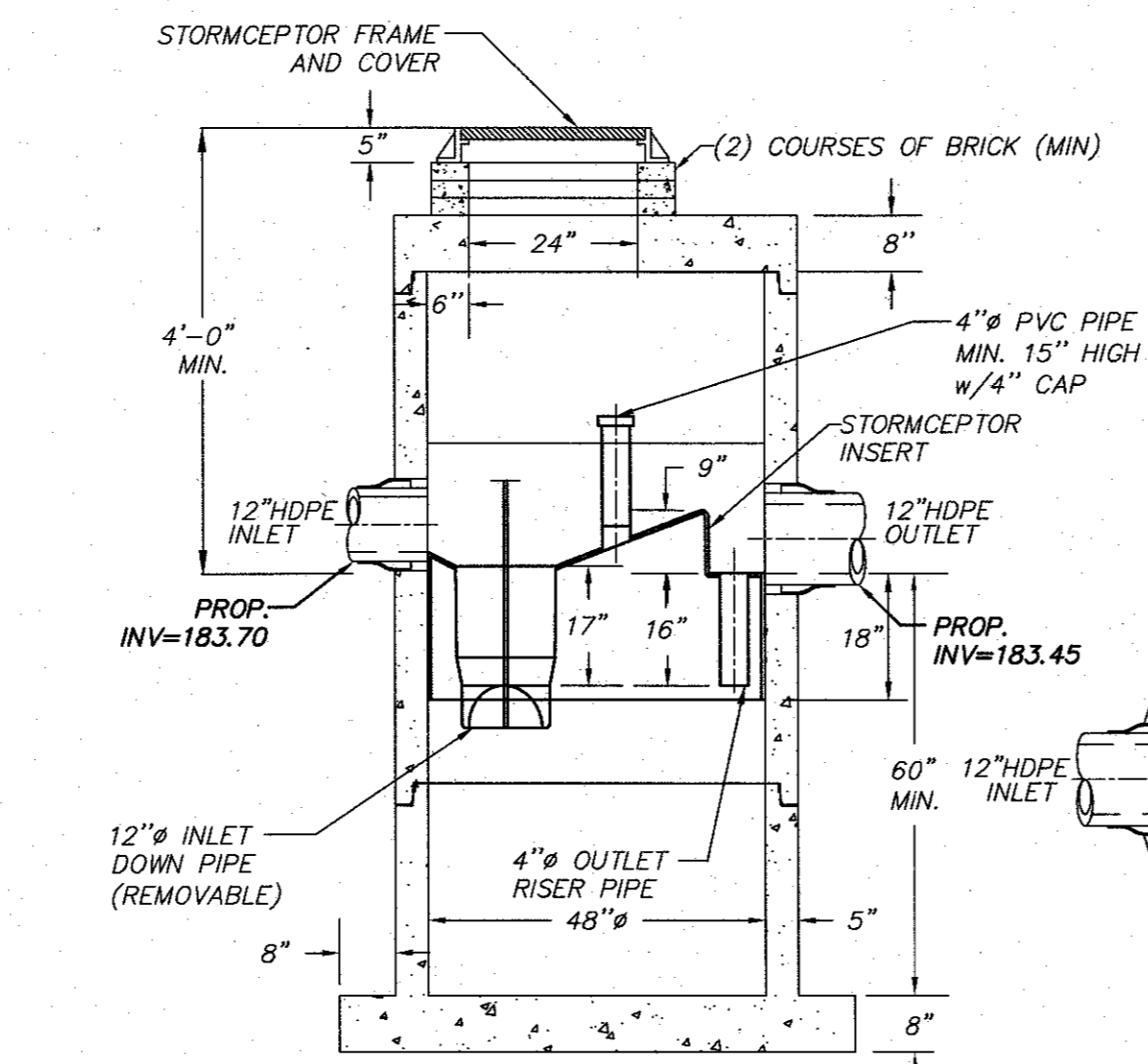
USE 2 CULTEC RECHARGER 330XLHD UNITS FOR PROPOSED ROOFS WITH FOOTPRINTS OF 1,700 SF (52'Wx8.5'Lx30.5'H)

**PROPOSED SUBSURFACE INFILTRATION SYSTEM FROM ROOF (TYPE B) - PLAN VIEW**  
(NOT TO SCALE)



USE 4 CULTEC RECHARGER 330XLHD UNITS FOR PROPOSED ROOFS WITH FOOTPRINTS OF 3,000 SF (52'Wx8.5'Lx30.5'H)

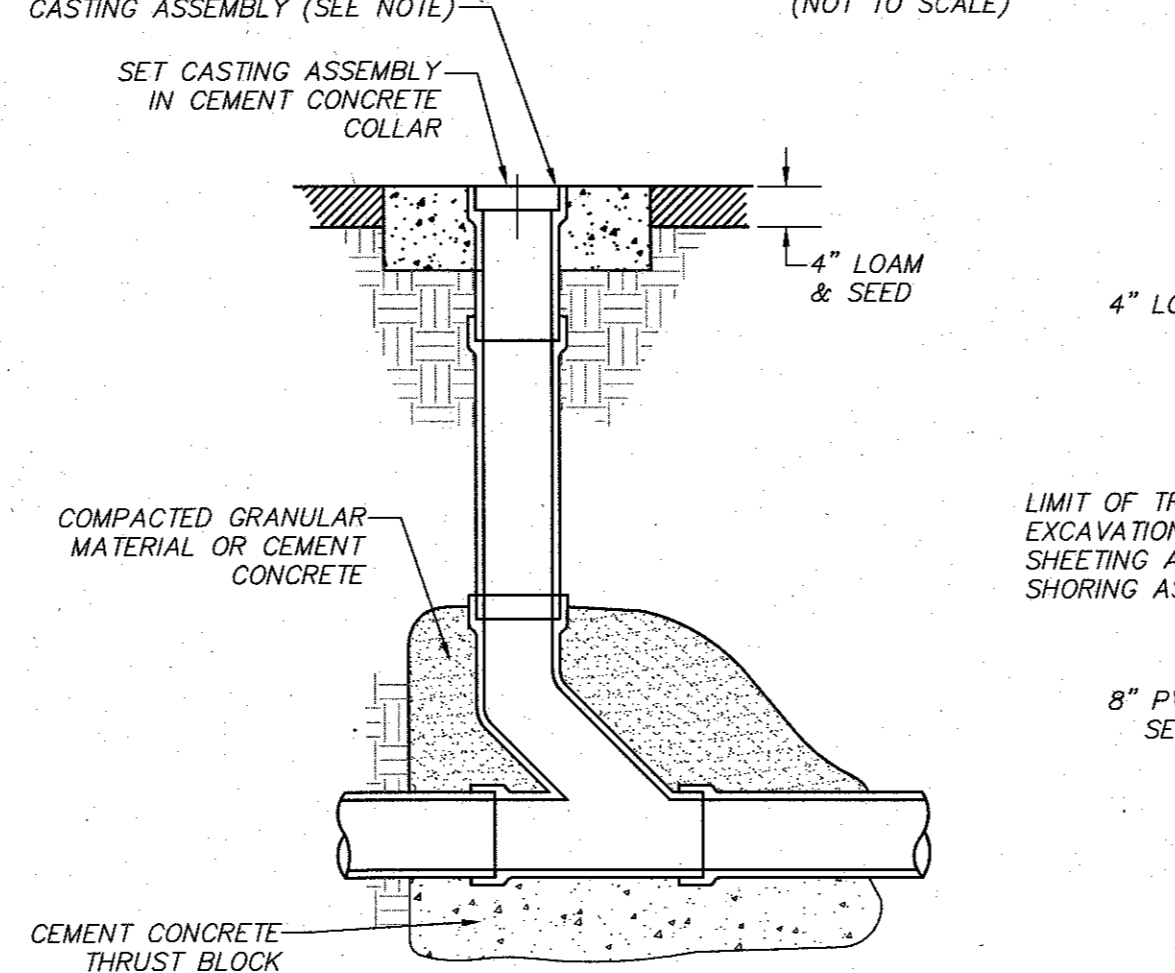
**PROPOSED SUBSURFACE INFILTRATION SYSTEM FROM ROOF (TYPE C) - PLAN VIEW**  
(NOT TO SCALE)



**SECTION THRU CHAMBER**  
**SECTION THRU PLAN VIEW**

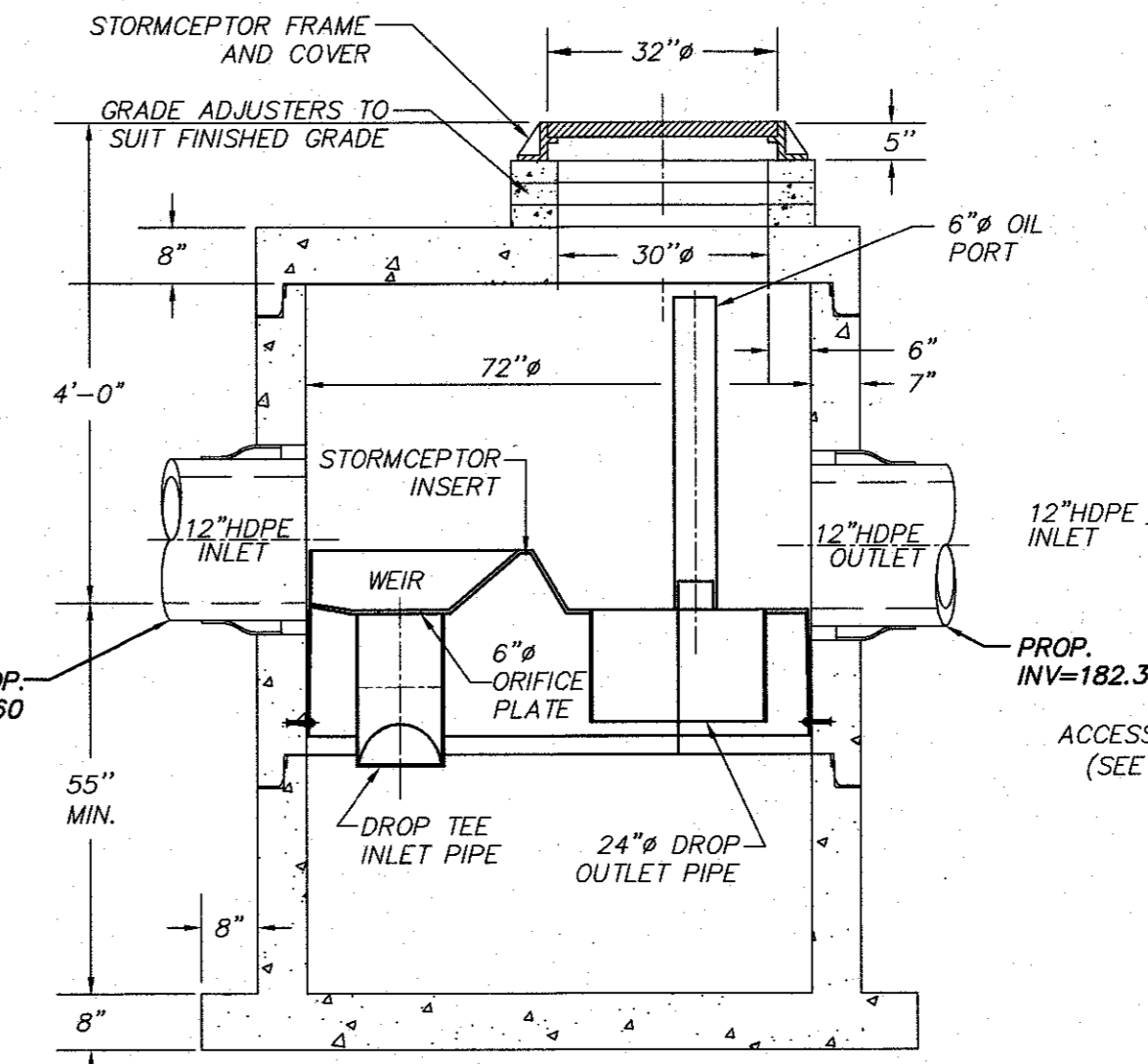
**NOTE:**  
 1. THE USE OF FLEXIBLE CONNECTIONS IS RECOMMENDED AT THE INLET AND OUTLET WHERE APPLICABLE.  
 2. THE COVER SHOULD BE POSITIONED OVER THE INLET DROP PIPE AND THE 4" OIL PORT.  
 3. THE STORMCEPTOR SYSTEM IS PROTECTED BY ONE OR MORE OF THE FOLLOWING U.S. PATENTS: #4986148, #5498331, #5725760, #5753115, #5849181, #6068765, #6371690.  
 4. CONTRACTOR TO PROVIDE CRANE TO SET UNIT.  
 5. UNIT MANUFACTURED BY CSR, 712 BROADWAY, SUITE 612, KANSAS CITY, MO 64105.

**PROPOSED WATER QUALITY INLET (PWQS#1)**  
(NOT TO SCALE)



**NOTES:**  
 1. ASSEMBLY TO BE EAST JORDAN IRON WORKS PRODUCT #00157321C01, NEENAH CAT. # R-1974-A, U.S. FOUNDRY MODEL USF 7610 HANDHOLE RING & FC COVER, OR APPROVED EQUAL.

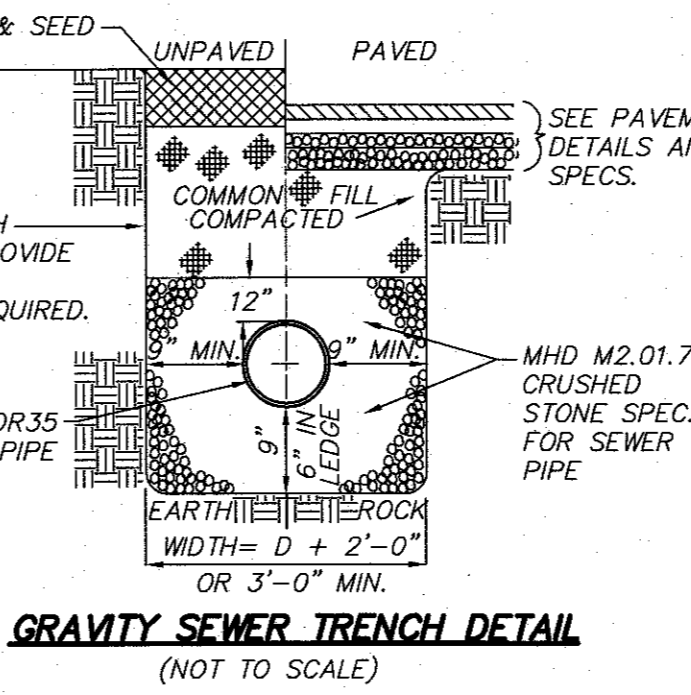
**CLEAN OUT DETAIL**  
(NOT TO SCALE)



**SECTION THRU CHAMBER**  
**PLAN VIEW**

**NOTE:**  
 1. THE USE OF FLEXIBLE CONNECTIONS IS RECOMMENDED AT THE INLET AND OUTLET WHERE APPLICABLE.  
 2. THE COVER SHOULD BE POSITIONED OVER THE OUTLET DROP PIPE AND THE 6" OIL PORT.  
 3. THE STORMCEPTOR SYSTEM IS PROTECTED BY ONE OR MORE OF THE FOLLOWING U.S. PATENTS: #4986148, #5498331, #5725760, #5753115, #5849181, #6068765, #6371690.  
 4. CONTRACTOR TO PROVIDE CRANE TO SET UNIT.  
 5. UNIT MANUFACTURED BY CSR, 712 BROADWAY, SUITE 612, KANSAS CITY, MO 64105.

**PROPOSED WATER QUALITY STRUCTURE (PWQS#2)**  
(NOT TO SCALE)



**NOTES:**  
 1. ASSEMBLY TO BE EAST JORDAN IRON WORKS PRODUCT #00157321C01, NEENAH CAT. # R-1974-A, U.S. FOUNDRY MODEL USF 7610 HANDHOLE RING & FC COVER, OR APPROVED EQUAL.

**CLEAN OUT DETAIL**  
(NOT TO SCALE)

**RECORD OWNERS:**

**71 EAST STREET:**  
 KEELER REALTY TRUST  
 PAUL R. KEELER III, TRUSTEE  
 11 EAST WALNUT STREET, UNIT 11  
 MILFORD, MA 01757  
 DEED 26635, PAGE 70\*

**79 EAST STREET:**  
 PBK NOMINEE TRUST  
 PAUL R. KEELER III, TRUSTEE  
 11 EAST WALNUT STREET, UNIT 11  
 MILFORD, MA 01757  
 DEED 32087, PAGE 498\*

**APPLICANT:**

SHELDON CORP.  
 TODD CATALDO  
 121 MARRETT ROAD  
 LEXINGTON, MA 02421

**REVISIONS**

NO.	DATE	DESCRIPTION	BY	CHK'D
1	10/12/11	PER PB MEMO (9/14/11) & TOWN ENGINEERING MEMO (9/20/11)	ACC	BWT

**NOTE: REFER TO STANDARD DETAILS AS PROVIDED BY THE TOWN OF LEXINGTON ENGINEERING DEPARTMENT FOR DETAILS NOT DEPICTED HEREON.**

71 & 79 EAST STREET  
 (ASSESSOR'S MAP 62 - LOTS 7 & 6)  
 DEFINITIVE SUBDIVISION  
 (IN ACCORDANCE WITH SECTION 175-32F)

**SITE DETAILS**  
 LOCATED IN  
**LEXINGTON, MASSACHUSETTS**  
 (MIDDLESEX COUNTY)

PREPARED FOR  
**SHELDON CORP.**  
 SCALE: N.T.S. DATE: AUGUST 17, 2011

**MERIDIAN ASSOCIATES**

500 CUMMINGS CENTER, SUITE 9500 69 MILK STREET, SUITE 302  
 BEVERLY, MASSACHUSETTS 01915 WESTBOROUGH, MASSACHUSETTS 01581  
 TELEPHONE: (978) 299-0447 TELEPHONE: (508) 871-7030  
 WWW.MERIDIANASSOC.COM

SHEET No. 9 OF 10 PROJECT No. 5322

