

PLANTING LEGEND

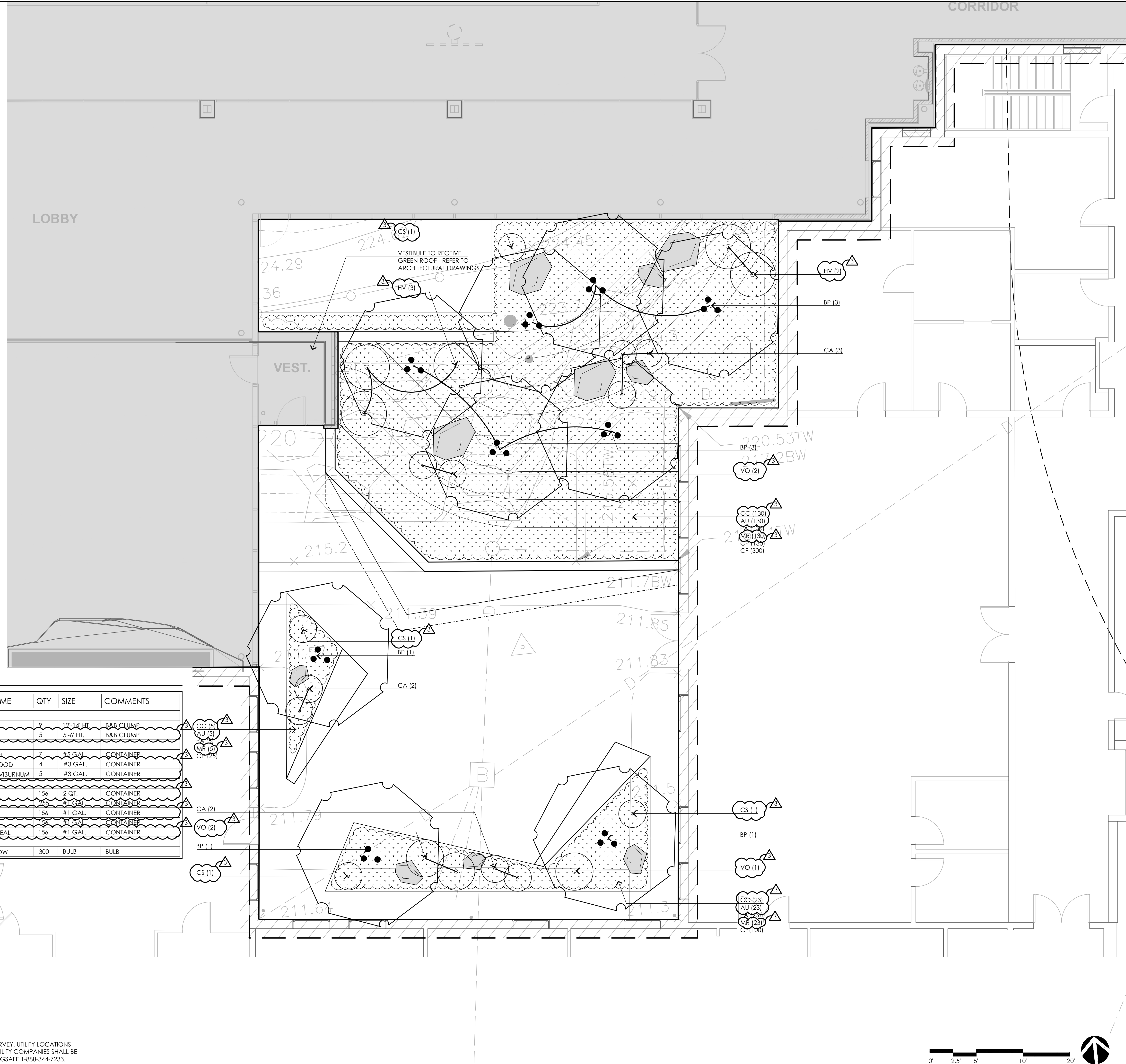
APPROXIMATE LIMIT OF WORK	---
BORDERING VEGETATED WETLAND	- - - - -
25' BVW NO DISTURB ZONE	----
50' BVW BUFFER	-----
100' BVW BUFFER	-----
ABUTTER LINE	-----
PROPOSED CONTOUR	-----
LARGE DECIDUOUS TREE	
SHRUBS	
BOULDERS	
PERENNIALS / GROUNDCOVER	

PLANTING NOTES

- THE LIMIT OF WORK SHOWN ON PLANTING PLANS IS APPROXIMATE AND RELATES TO LANDSCAPE WORK ONLY. REFER TO OTHER DRAWINGS FOR ADDITIONAL LIMIT OF WORK INFORMATION RELATED TO OTHER DISCIPLINES.
- EXISTING CONDITIONS INFORMATION IS REPRODUCED FROM THE SURVEY PREPARED BY WELCH ASSOCIATES LAND SURVEYORS, INC., LOCATED AT 218 NORTH MAIN STREET, WEST BRIDGEWATER, MA, AND DATED AUGUST 23, 2018.
- CONTRACTOR SHALL BEGIN MAINTENANCE IMMEDIATELY AFTER PLANTING AND WILL CONTINUE UNTIL FINAL WRITTEN ACCEPTANCE OF PLANT MATERIAL.
- CONTRACTOR SHALL VERIFY ALL TREE REMOVALS AND/OR TRANSPLANTS WITH LANDSCAPE ARCHITECT PRIOR TO CONSTRUCTION START.
- CONTRACTOR SHALL MAINTAIN POSITIVE DRAINAGE AWAY FROM PROPOSED BUILDING, STRUCTURES, AND PLANTING BEDS.
- MAXIMUM SLOPE WITHIN DISTURBED AREAS SHALL NOT EXCEED 3:1, UNLESS OTHERWISE NOTED.
- THE LANDSCAPE CONTRACTOR SHALL SUPPLY ALL PLANT MATERIALS IN QUANTITIES SUFFICIENT TO COMPLETE ALL PLANTINGS SHOWN ON THIS DRAWING.
- ALL MATERIALS SHALL CONFORM TO THE GUIDELINES ESTABLISHED BY THE AMERICAN NURSERY AND LANDSCAPE ASSOCIATION.
- ALL PLANTS SHALL BEAR THE SAME RELATIONSHIP TO FINISH GRADE AS TO ORIGINAL GRADES BEFORE DIGGING.
- FINAL LAYOUT OF PLANTINGS WILL BE IN THE FIELD PER THE DIRECTION OF THE LANDSCAPE ARCHITECT. PROVIDE A MINIMUM FORTY-EIGHT (48) HOURS NOTICE PRIOR TO BEGINNING FINAL LAYOUT AND PLANTING OPERATIONS.
- ALL PLANTS TO BE BALLED IN BURLAP OR CONTAINERIZED.
- ALL PLANTED AREAS TO BE EDGED AND MULCHED WITH AGED PINE BARK; PARTIALLY DECOMPOSED, DARK BROWN IN COLOR AND FREE OF WOOD CHIPS THICKER THAN 1/4 INCH.
- PLANTING SOIL MIX: UTILIZE EXISTING SITE LOAM FROM STOCKPILES. THOROUGHLY INCORPORATE WITH COMPOST AS NEEDED PER SOILS ANALYSIS. FERTILIZE PER RECOMMENDED RATES IN SOIL ANALYSIS.
- THE LANDSCAPE CONTRACTOR SHALL GUARANTEE ALL PLANT MATERIALS FOR ONE (1) FULL YEAR FROM DATE OF ACCEPTANCE.
- ALL PLANT MATERIALS ARE SUBJECT TO THE APPROVAL OF THE LANDSCAPE ARCHITECT, AT THE NURSERY, AND AT THE SITE.
- ALL AREAS OF THE SITE WHICH HAVE BEEN DISTURBED AND NOT OTHERWISE DEVELOPED SHALL BE LOAMED AND SEEDED OR SODDED (REFER TO PLANS) WITH A MINIMUM DEPTH OF 8" DEPTH TOPSOIL UNLESS OTHERWISE NOTED.

COURTYARD PLANTING SCHEDULE

SYMBOL	BOTANICAL NAME	COMMON NAME	QTY	SIZE	COMMENTS
DECIDUOUS TREES					
BP	BETULA POPULIFOLIA 'WHITESPIRE'	WHITESPIRE BIRCH	9	12'-14' HT.	B&B CLUMP
HV	HAMAMELIS VIRGINIANA	WITCHHAZEL	5	5'-6' HT.	B&B CLUMP
SHRUBS					
CA	CLETHRA ALNIFOLIA	SWEET PEPPER BUSH	7	#5 GAL.	CONTAINER
CS	CORNUS SERICEA	RED-OSIER DOGWOOD	4	#3 GAL.	CONTAINER
VO	VIBURNUM OPULUS VAR. AMERICANUM	CRANBERRY BUSH VIBURNUM	5	#3 GAL.	CONTAINER
PERENNIALS AND GROUND COVER					
CC	CORNUS CANADENSIS	BUNCHBERRY	156	2 QT.	CONTAINER
CF	COMPTONIA PERUVIANA	SWEET FERN	756	#1 GAL.	CONTAINER
AU	ARCTOSTAPHYLOS UVA-URSI	BEARBERRY	156	#1 GAL.	CONTAINER
FA	POLYSTICHUM ACROSTICHOIDES	CHRISTMAS FERN	156	#1 GAL.	CONTAINER
MR	MAIANTHEMUM RACEMOSUM	FALSE SOLOMON SEAL	156	#1 GAL.	CONTAINER
BULBS					
CF	CHIONDOXA FORBESII	GLORY OF THE SNOW	300	BULB	BULB



CONSULTANTS

ARCHITECT -
ARC

GEOTECHNICAL ENGINEER -
GEOTECHNICAL SERVICES, INC.

WETLAND DELINEATION -
EPSILON ASSOCIATES, INC.

SURVEY -
WELCH ASSOCIATES LAND SURVEYORS

THE COTTING SCHOOL
 Lexington, MA
ATHLETIC ADDITION

Permitting Documents

REVISIONS:

NO.	DATE	DESCRIPTION
1	08.12.19	NOI SUBMISSION
2	08.21.19	SITE PLAN REVIEW SUBMISSION
3	11.26.19	RESPONSE TO P8 9/25/19 COMMENTS

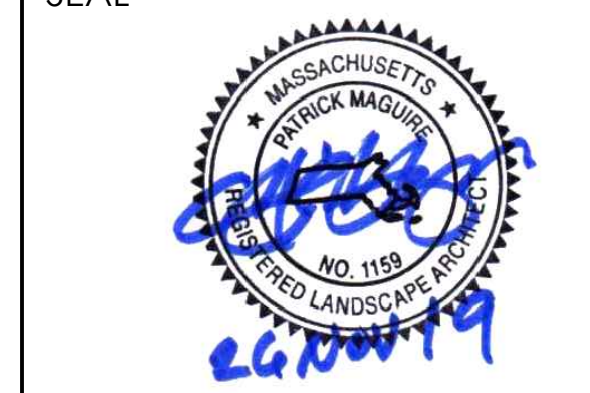
SCALE: 1"=5'-0"

PROJECT NO.: 18005.00

FILE: 18005-L-3.2-P_PLAN.dwg

DRAWN: BPG

CHECKED: EPM, MEB



SHEET TITLE:
COURTYARD PLANTING PLAN

SHEET NO.:
L3.2

CONTACT DIGSAFE:
 UNDERGROUND UTILITIES SHOWN ON THE PLAN ARE COMPILED FROM PLANS AND FIELD SURVEY. UTILITY LOCATIONS SHOULD BE CONSIDERED APPROXIMATE ONLY. DIGSAFE AND/OR THE OTHER RESPECTIVE UTILITY COMPANIES SHALL BE CONTACTED 72 BUSINESS HOURS IN ADVANCE OF CONSTRUCTION OPERATIONS. PHONE DIGSAFE 1-888-344-7233.