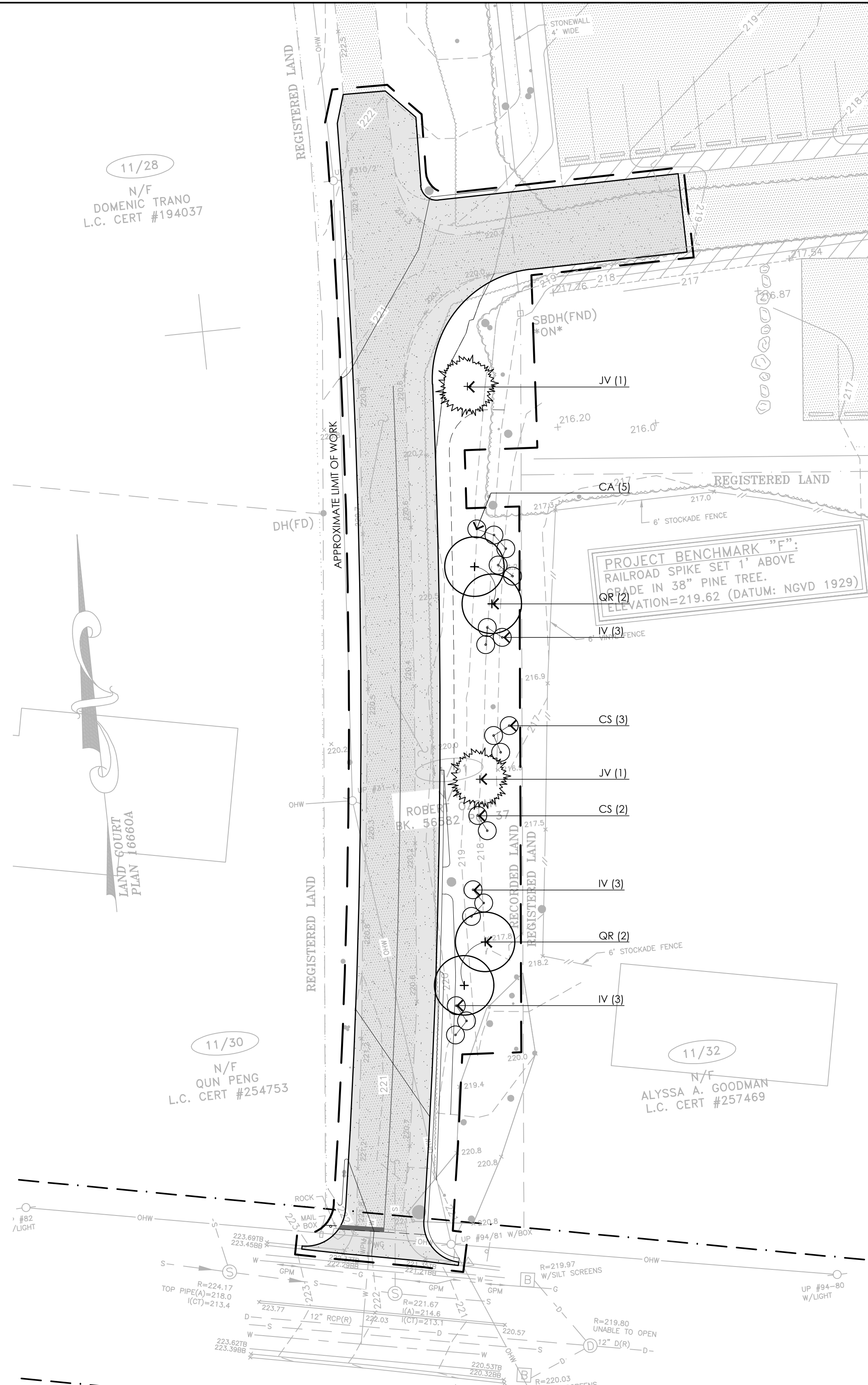


**1 GRADING PLAN**  
SCALE: 1"=20'-0"



**2 PLANTING PLAN**  
SCALE: 1"=20'-0"

**PROPOSED TREE PLANTING SCHEDULE**

| SYMBOL                   | BOTANICAL NAME       | COMMON NAME       | QTY | SIZE       | COMMENTS  |
|--------------------------|----------------------|-------------------|-----|------------|-----------|
| <b>DECIDUOUS TREES :</b> |                      |                   |     |            |           |
| QR                       | QUERCUS RUBRA        | RED OAK           | 4   | 8'-10" HT  | B&B       |
| <b>EVERGREEN TREES :</b> |                      |                   |     |            |           |
| JV                       | JUNIPERUS VIRGINIANA | EASTERN RED CEDAR | 2   | 2" CALIPER | B&B       |
| <b>SHRUBS :</b>          |                      |                   |     |            |           |
| CA                       | CLETHRA ALNIFOLIA    | SWEET PEPPERBUSH  | 5   | 30"-36" HT | CONTAINER |
| CS                       | CORNUS SERICEA       | RED TWIG DOGWOOD  | 5   | 30"-36" HT | CONTAINER |
| IV                       | ILEX VERTICILLATA    | WINTERBERRY       | 9   | 30"-36" HT | CONTAINER |

**NOTE:**  
REFER TO SPECIFICATIONS FOR FULL INFORMATION RELATED TO POROUS ASPHALT PAVEMENT. BELOW IS A DESCRIPTION OF THE POROUS ASPHALT MIX AND A SUMMARY OF THE VARIOUS POROUS MEDIA INFILTRATION BEDS.

**POROUS ASPHALT MIX:** MODIFIED PERFORMANCE GRADE ASPHALT BINDER. REFER TO SPECIFICATIONS

**CHOKER COURSE:** CRUSHED STONE. REFER TO SPECIFICATIONS

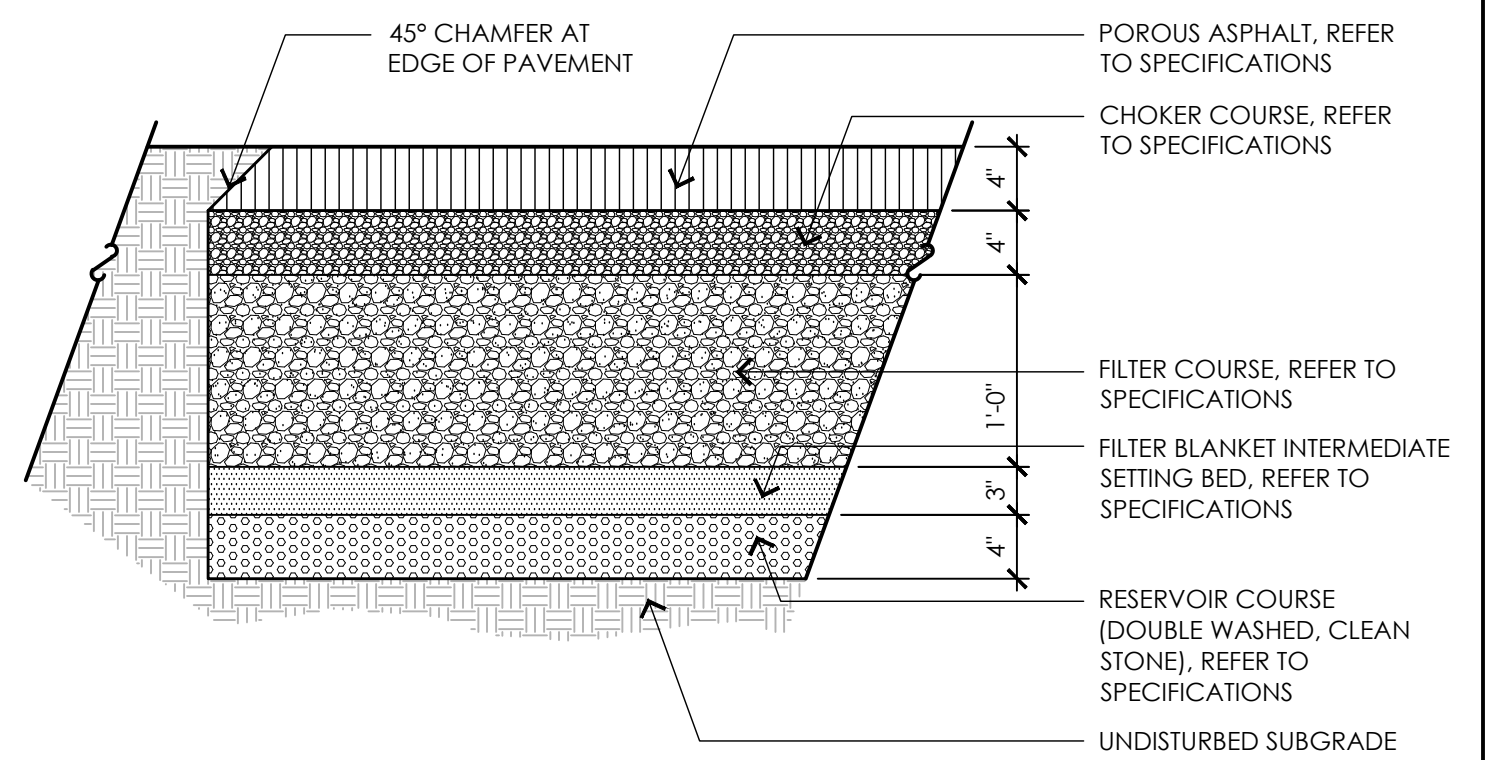
**FILTER COURSE:** POORLY GRADED SAND (BANK RUN GRAVEL). REFER TO SPECIFICATIONS

**FILTER BLANKET:** PEA GRAVEL (3/8" MEDIAN PARTICLE SIZE). REFER TO SPECIFICATIONS

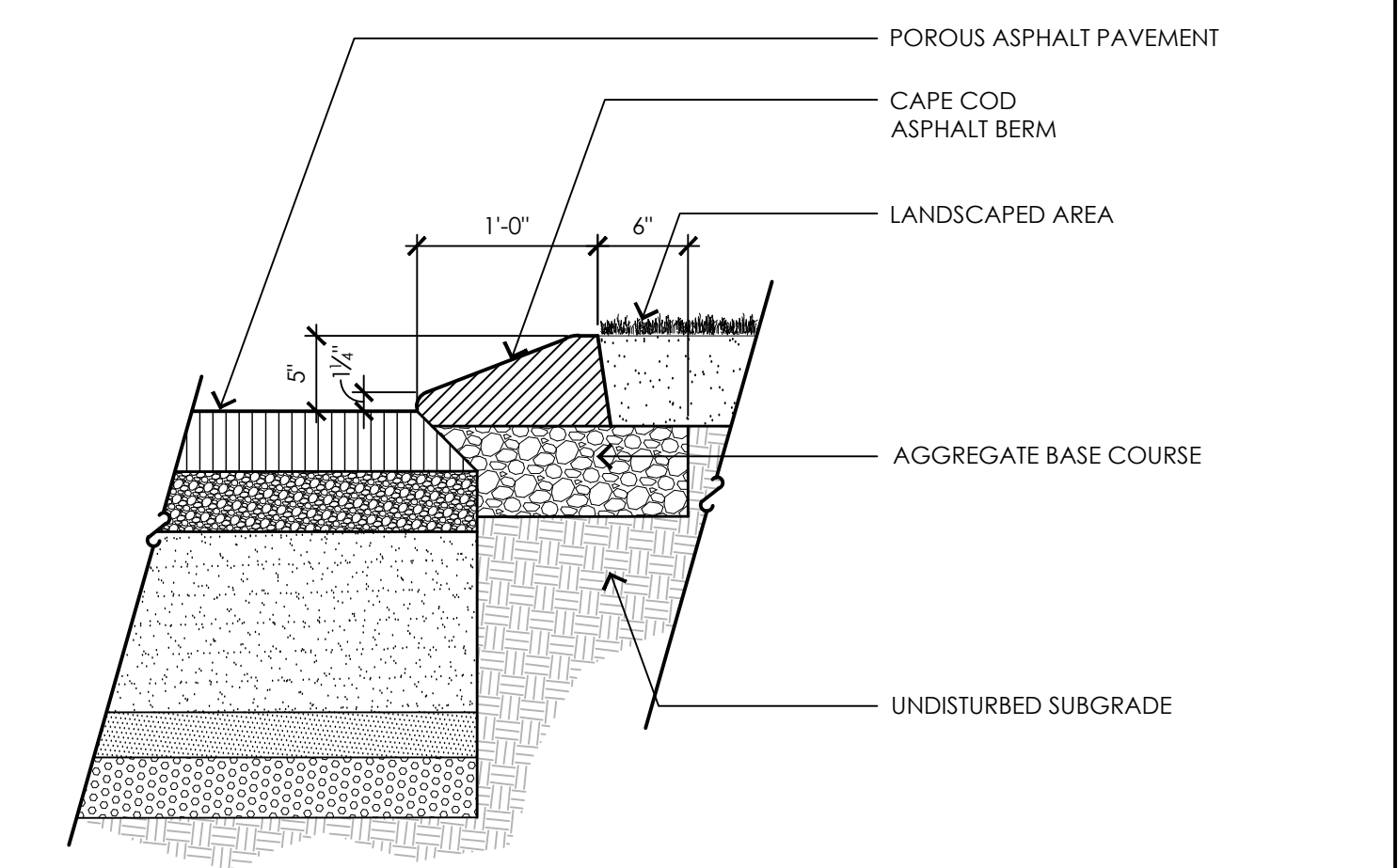
**RESERVOIR COURSE:** DOUBLE WASHED CLEAN CRUSHED STONE FOR DRAINAGE. REFER TO SPECIFICATIONS

| US Standard Sieve Size | Percent Passing (%)                 |                                   |                                 |   |
|------------------------|-------------------------------------|-----------------------------------|---------------------------------|---|
|                        | Choker Course (AASHTO No. 57/No.67) | Filter Course (Manufactured Sand) | Reservoir Course (AASHTO No. 3) | Reservoir Course Alternative (AASHTO No. 5) |
| 6 in.                  |                                     | 100                               | 100                             |   |
| 2 1/2 in.              |                                     |                                   | 90 - 100                        |   |
| 2 in.                  |                                     |                                   | 35 - 70                         | 100   |
| 1 1/2 in.              | 100                                 |                                   | 0 - 15                          | 90 - 100                                    |
| 1 in.                  | 95 - 100                            |                                   | 0 - 5                           | 20 - 55                                     |
| 3/4 in.                | 25 - 60                             |                                   | 0 - 5                           | 0 - 5                                       |
| 1/2 in.                |                                     | 70-100                            |                                 |   |
| 3/8 in.                |                                     | 0 - 6                             |                                 |   |
| No. 4                  | 0 - 10                              |                                   |                                 |   |
| No. 8                  | 0 - 5                               |                                   |                                 |   |
| No. 200                |                                     |                                   |                                 |   |

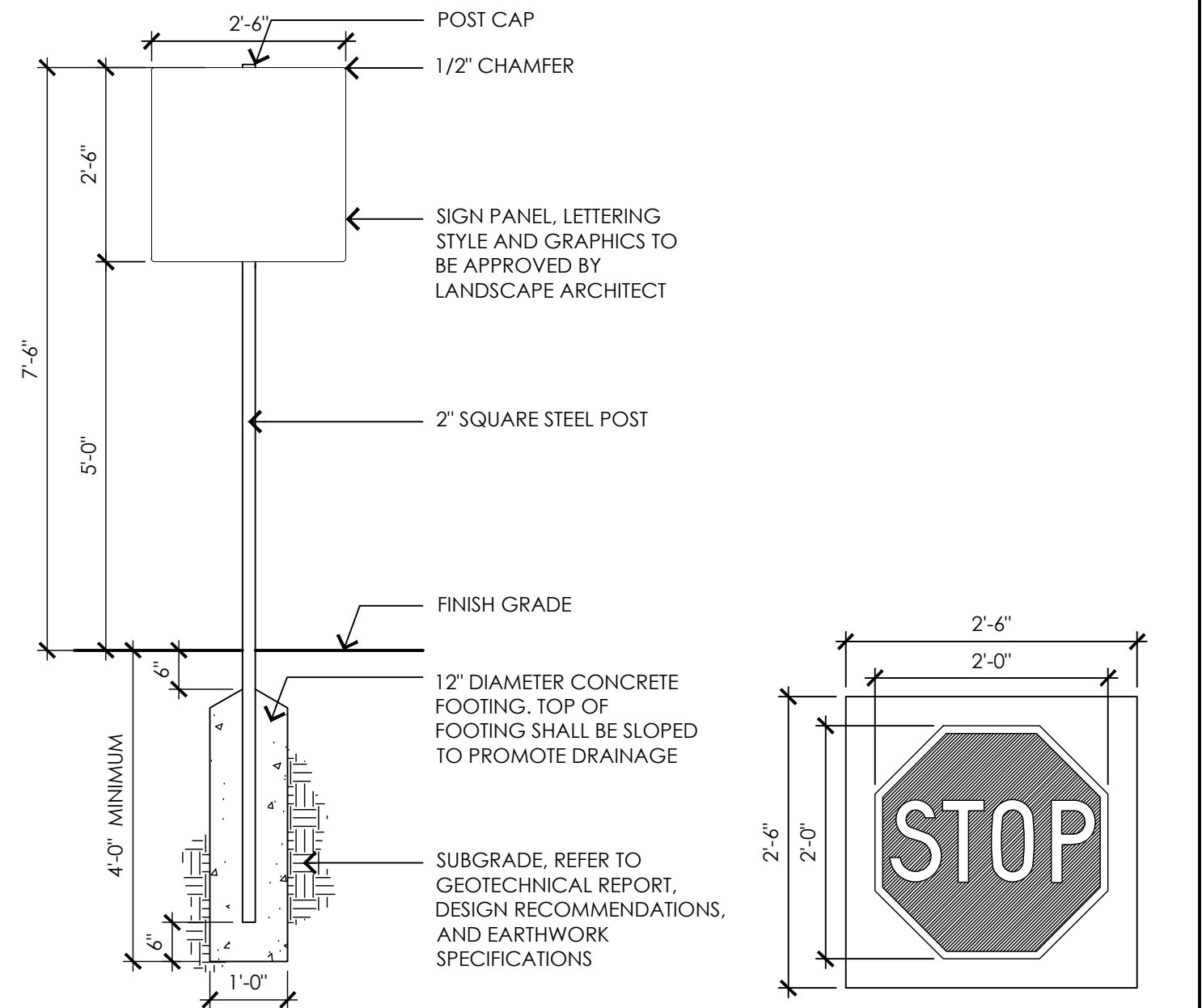
\* Preferably less than 4% fines



**3 POROUS ASPHALT PAVEMENT**  
NOTE TO SCALE



**4 CAPE COD ASPHALT BERM**  
NOTE TO SCALE



**5 SIGNAGE POST AND PANEL**  
NOTE TO SCALE

**CONSULTANTS**

ARCHITECT - ARC

GEOTECHNICAL ENGINEER - GEOTECHNICAL SERVICES, INC.

WETLAND DELINEATION - EPSILON ASSOCIATES, INC.

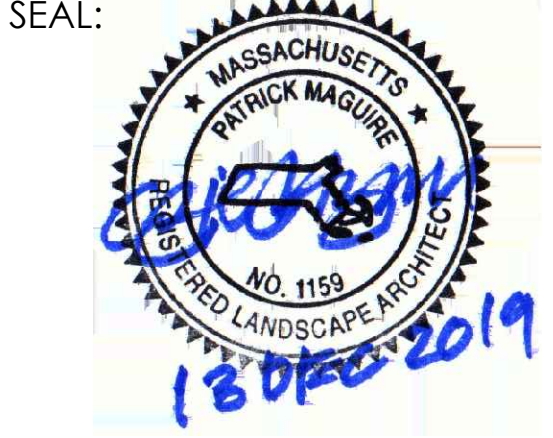
SURVEY - WELCH ASSOCIATES LAND SURVEYORS

**THE COTTING SCHOOL**  
Lexington, MA  
ATHLETIC ADDITION

**Permitting Documents**

| NO. | DATE     | DESCRIPTION                       |
|-----|----------|-----------------------------------|
| 1   | 11.26.19 | RESPONSE TO PB 9/25/19 COMMENTS   |
| 2   | 12.13.19 | RESPONSE TO 12/4/19 LSPR COMMENTS |

SCALE: 1"=20'-0"  
PROJECT NO.: 18005.00  
FILE: 18005-L-1.1-LM\_PLAN.dwg  
DRAWN: BPG  
CHECKED: EPM, MEB



SHEET TITLE:  
489 CONCORD AVE  
DRIVE SITE PLAN -  
SHEET II  
SHEET NO:

CONTACT DIGSAFE: UNDERGROUND UTILITIES SHOWN ON THE PLAN ARE COMPILED FROM PLANS AND FIELD SURVEY. UTILITY LOCATIONS SHOULD BE CONSIDERED APPROXIMATE ONLY. DIGSAFE AND/OR THE OTHER RESPECTIVE UTILITY COMPANIES SHALL BE CONTACTED 72 BUSINESS HOURS IN ADVANCE OF CONSTRUCTION OPERATIONS. PHONE DIGSAFE 1-888-344-7233.