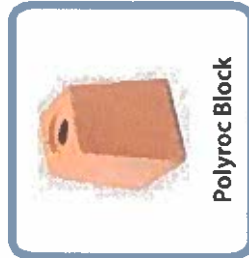
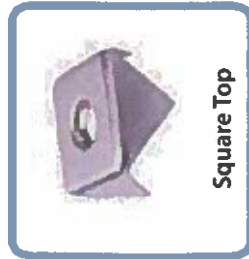


**Berntsen**  
Marking the Infrastructure of the World.™  
**Recommended Installation  
Tools & Accessories**

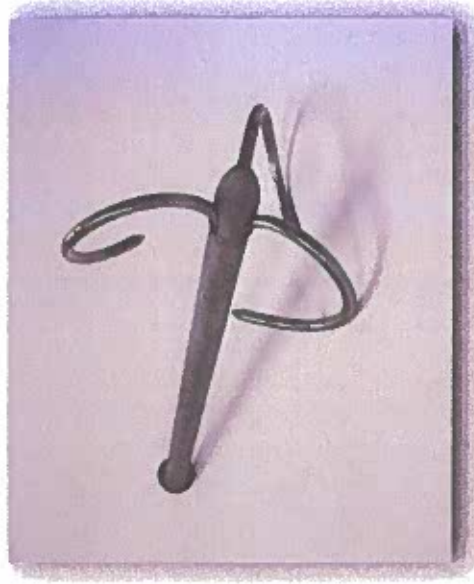


All tools available at [www.berntsen.com](http://www.berntsen.com)

**Berntsen**  
Marking the Infrastructure of the World.™



**Berntsen**  
Marking the Infrastructure of the World.™



**REMEMBER:**  
*"Any Monument Is Only As Good As  
How It Was Set."*

**Questions or Comments?**

Contact us at:

Berntsen International, Inc.  
PO Box 8670  
Madison, WI 53708-8670

Call: (800) 356-7388  
Fax: (800) 249-9794

[surveymark@berntsen.com](mailto:surveymark@berntsen.com)

[www.berntsen.com](http://www.berntsen.com)

**Installation  
Instructions**

**FENO®  
Anchored  
Survey Markers**

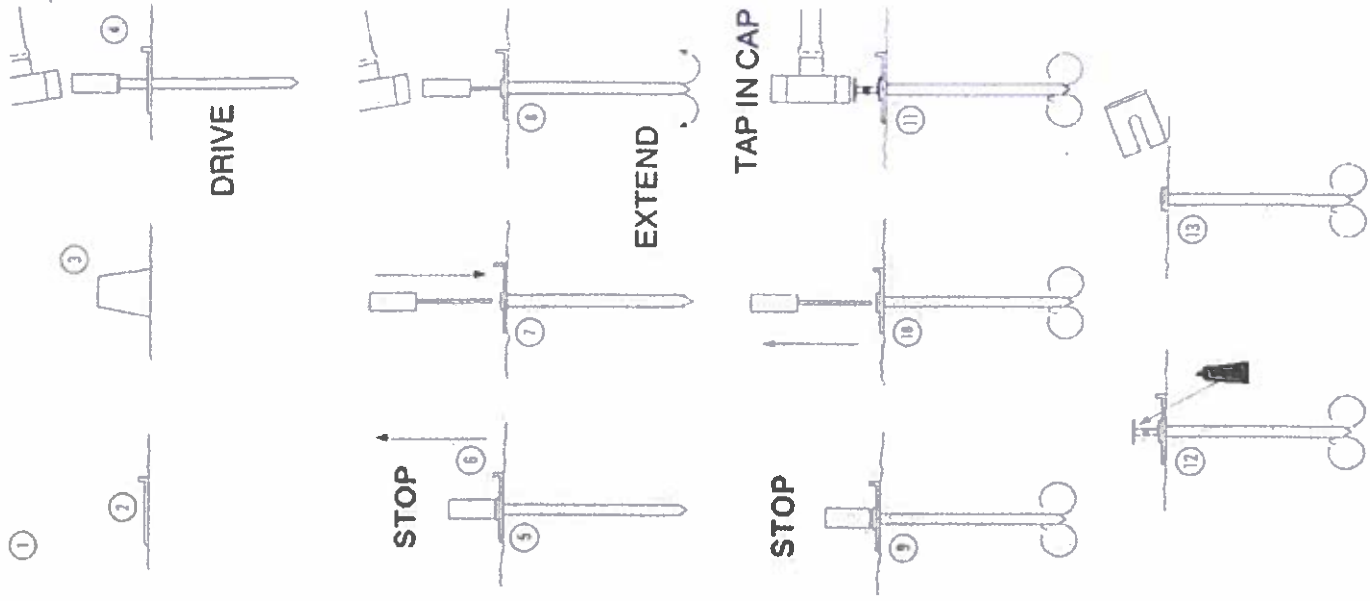
## Materials Required For Setting FENO® Monument:

- 1. Feno® Survey Marker**  
(F350SPK, F600SPK, F1000SPK)
- 2. Survey Cap - 2" (50mm) or 3 1/2" (89mm)**  
diameter cap in aluminum or bronze:  
- F50ARA - 2" alum. for F350SPK/F600SPK  
- F50ARB - 2" alum. for F1000SPK  
- F50BRA - 2" bronze for F350SPK/F600SPK  
- F50BRB - 2" bronze for F1000SPK  
- F83ARA - 3/4" alum. for F350SPK/F600SPK  
- F83ARB - 3/4" alum. for F1000SPK  
- F83BRA - 3/4" bronze for F350SPK/F600SPK  
- F83BRB - 3/4" bronze for F1000SPK
- 3. Installation Tool Kit** - consists of:  
- Driving Tool (F350DRI, F600DRI, F1000DRI)  
- Extension Sleeve (F350SLV, F600SLV, F1000SLV)  
- Ground Plate (F350600GP or F1000GP)
- 4. Lixie Deadblow Hammer**  
(LN7, LX10, LX11)
- 5. Steel stamp set**  
(for marking information on survey cap)  
If possible, stamp data on cap before installing.
- 6. Work gloves and proper eye protection**
- 7. Loctite PL - Premium Adhesive**  
(necessary for aluminum caps only)
- 8. Optional: Feno® Polyroc Monument Block**  
available in Red, White, and Yellow:  
(F90WHITELS, F90YELLOWLS, F90REDELS)  
for F350SPK or F600SPK; and (F110WHITELS,  
F110YELLOWLS, F110REDELS)  
for F1000SPK.

**CAUTION:** Before beginning any monument installation, contact your local ONE-CALL Utility Location Service to verify the safety of your chosen location.

## Installation Steps:

1. Determine point for placement of survey marker.
2. Place ground plate (F350600GP or F1000GP) at desired point.
3. **OPTIONAL:** Place Polyroc Monument Block (F90WHITELS, F90YELLOWLS, F90REDELS, F110WHITELS, F110YELLOWLS, F110REDELS) on top of the ground plate at point.
4. Drive the Feno® spike into the ground through the Ground Plate, using the driving tool and hammer.
5. Stop driving the spike when the top of the spike reaches the ground plate (STOP position).
6. Remove the driving tool.
7. Place the Extension Sleeve (F350SLV, F600SLV, or F1000SLV) down inside the spike.
8. Drive the Extension Sleeve downwards with the hammer. This ensures that the Polyroc Monument Block (if used) is firmly held in place and the anchor prongs are expanded and driven into the soil.
9. Stop driving the Extension Sleeve when the bottom of the handle is about 20mm (3/4") above the top of the spike (STOP position).
10. Remove the Extension Sleeve.
11. Carefully tap survey cap into top of Feno® spike until it is completely seated in spike.
12. For aluminum caps only, a bead of Loctite premium adhesive will need to be applied to the area where the cap meets the top of the spike.
13. Remove Ground Plate.



## FENO Survey Markers

### CAP

#### Prices

\$18.64

1 - 10

\$11.92

11 - 24

\$9.98

25 - 99

\$9.56

100 - 249

\$9.45

250 or more

**F89ARB - 3 1/2" Aluminum cap for 1000mm FENO Spike (Domed)**



#### Prices

\$42.45

1 - 10

\$37.25

11 - 24

\$34.70

25 - 99

\$32.55

100 - 249

\$31.80

250 or more

**F89BRB - 3 1/2" Bronze cap for 1000mm FENO Spike (Domed)**



### SPIKE



#### Prices

\$40.00 each

**F1000SPK - 1 000 mm (39.4") FENO Survey Marker (spike only)**

# CAP LABEL

F89ARB



3 1/2" Aluminum cap for 1000mm FENO Spike (Domed)

## Prices

\$18.64	1 - 10
\$11.92	11 - 24
\$9.98	25 - 99
\$9.56	100 - 249
\$9.45	250 or more

All prices USD

Availability In Stock

NO CHARGE for stamping 11 or more markers. There is a \$35 setup charge for stamping fewer markers.

Qty:

SHOPPING GUARANTEE FREE  
ID Protection Purchase Lowest Price

Please enter the text you would like printed in the text boxes provided below:

### Outside Row

Total of 46 characters and spaces.

Centered at 12 o'clock:

CONSERVATION AREA

Centered at 6 o'clock:

DISTURB OR DUMPING

### Inside Row

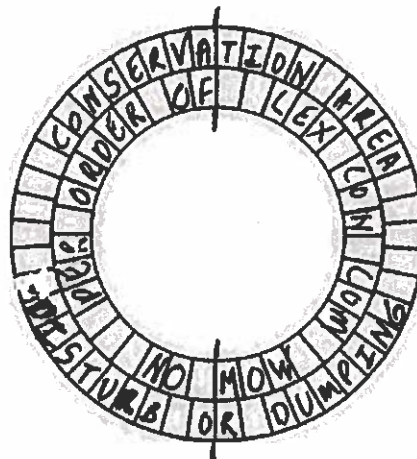
Total of 36 characters and spaces.

Centered at 12 o'clock:

PER ORDER OF LEX CON COM

Centered at 6 o'clock:

NO MOW



Please select the center mark for this cap:

FENO Survey Markers

**POLYROC MONUMENT BLOCK**



Prices

\$43.79

each

**F110WHITELS - White Polyroc Monument Blocks for 1000 mm FENO Spike**



Prices

\$43.79

each

**F110REDLS - Red Polyroc Monument Blocks for 1000 mm FENO Spike**



Prices

\$43.79

each

**F110YELLOWLS - Yellow Polyroc Monument Blocks for 1000 mm FENO Spike**